

Legend

- Flood Limit
- Cross Section - Station (Floodline Elevation) (CGVD2013 | CGVD28.78)
- Cross Section (Local Surface Model) - Station (Floodline Elevation) (CGVD2013 | CGVD28.78)
- 2m Elevation Contour
- Floodplain Spill
- Spill

Scale:
ANSI D (22x34): 1:2000

Scale:
0 25 50 100 150 200
Meters

Scale:
1:2,000

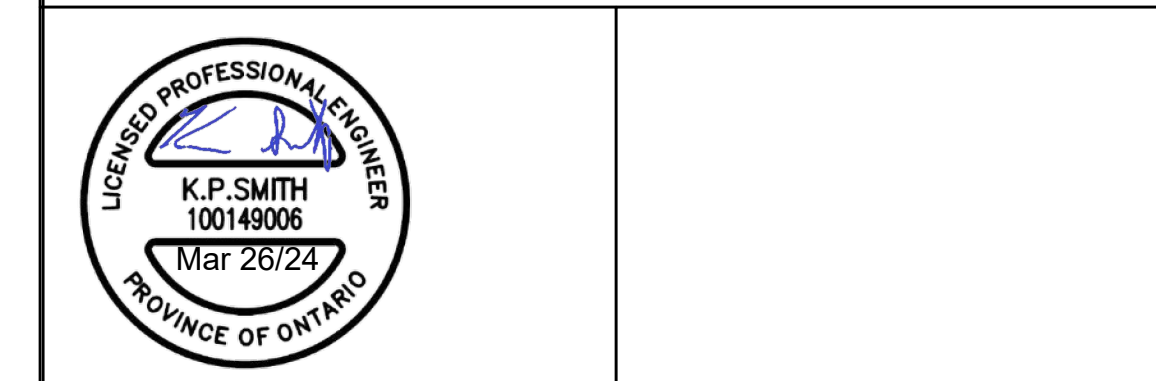
North Arrow:
N
True North
S
NAD83 UTM
Zone 17 North
CGVD 2013

Revisions

No.	Description	By	Date
0	DRAFT SUBMISSION TO LSRC	KS	2/14/24
1	FIRST SUBMISSION FOR PROVINCIAL REVIEW	KS	2/15/24
2	FINAL SUBMISSION	KS	3/26/24

Notes:

- Modeled in ArcMap 10.7, HEC-RAS Version 6.3.1.
- All units are metric and in meters unless otherwise specified.
- Aerial imagery from Barrie 2022.
- Regulatory Event for Dyments Creek is Hurricane Hazel.



WILLS

D.M. Wills Associates Limited
150 Jameson Drive
Peterborough, Ontario
K9J 0B9

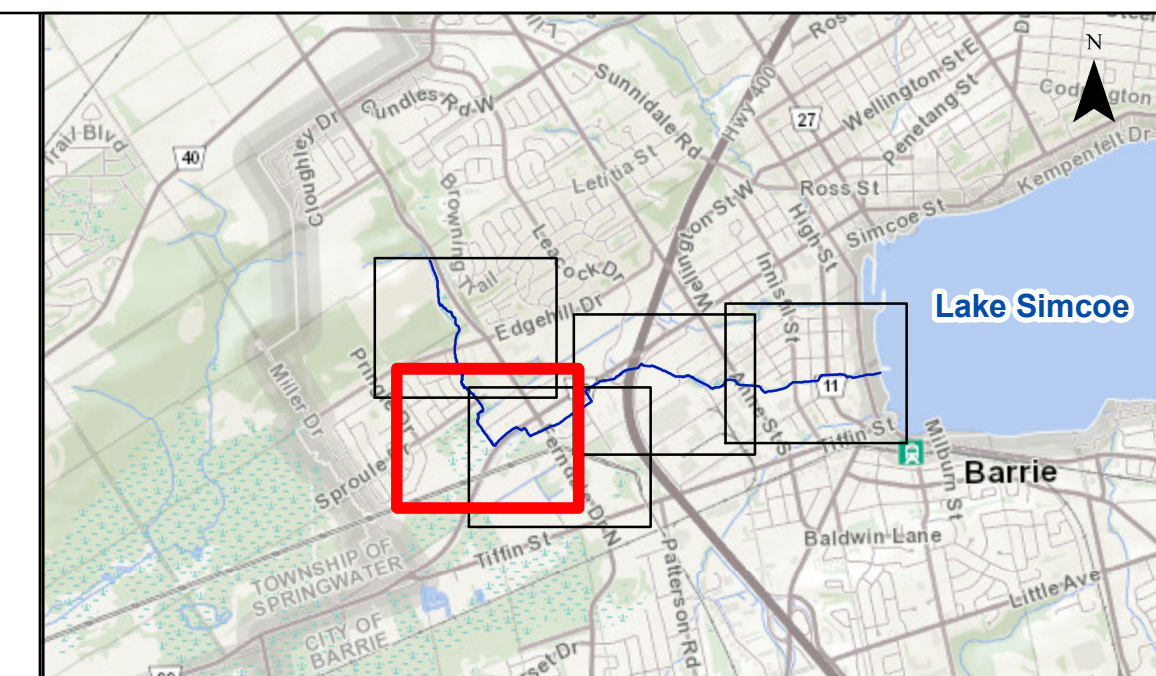
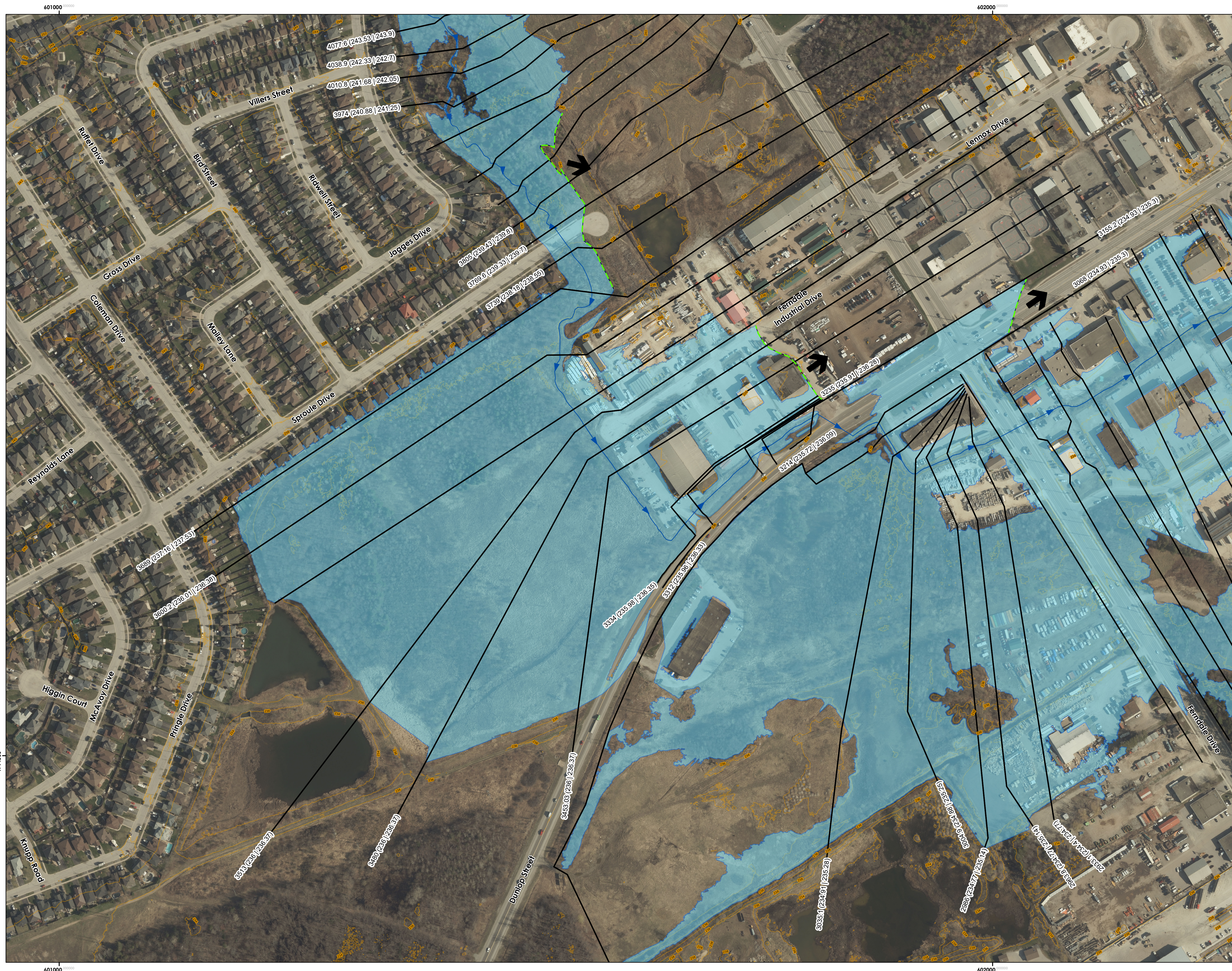
P. 705.742.2297
F. 705.741.3568
E. wills@dmwills.com

Engineer: KS/SO
Designed By: SO
Checked By: KS
Date: 3/26/24
Project No. 23-561 I
Map File No. Final FPM

**DYMENTS CREEK
REGULATORY FLOODLINE LIMITS**

Lake Simcoe Region Conservation Authority
City of Barrie

DYMENTS CREEK FIGURE 1.4



Legend

- Flood Limit
- Cross Section - Station (Floodline Elevation) (CGVD2013 | CGVD28:78)
- Cross Section (Local Surface Model) - Station (Floodline Elevation) (CGVD2013 | CGVD28:78)
- 2m Elevation Contour
- Floodplain Spill
- Spill

Scale: ANS I D (22x34): 1:2000

0 25 50 100 150 200 Meters

1:2,000

Revisions

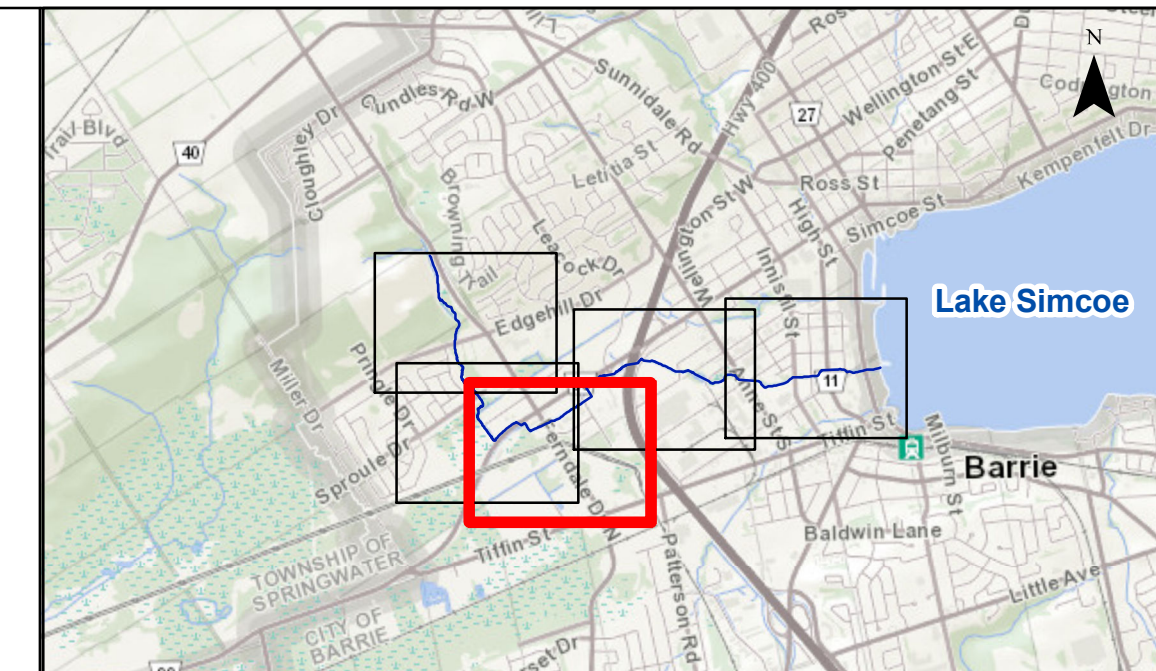
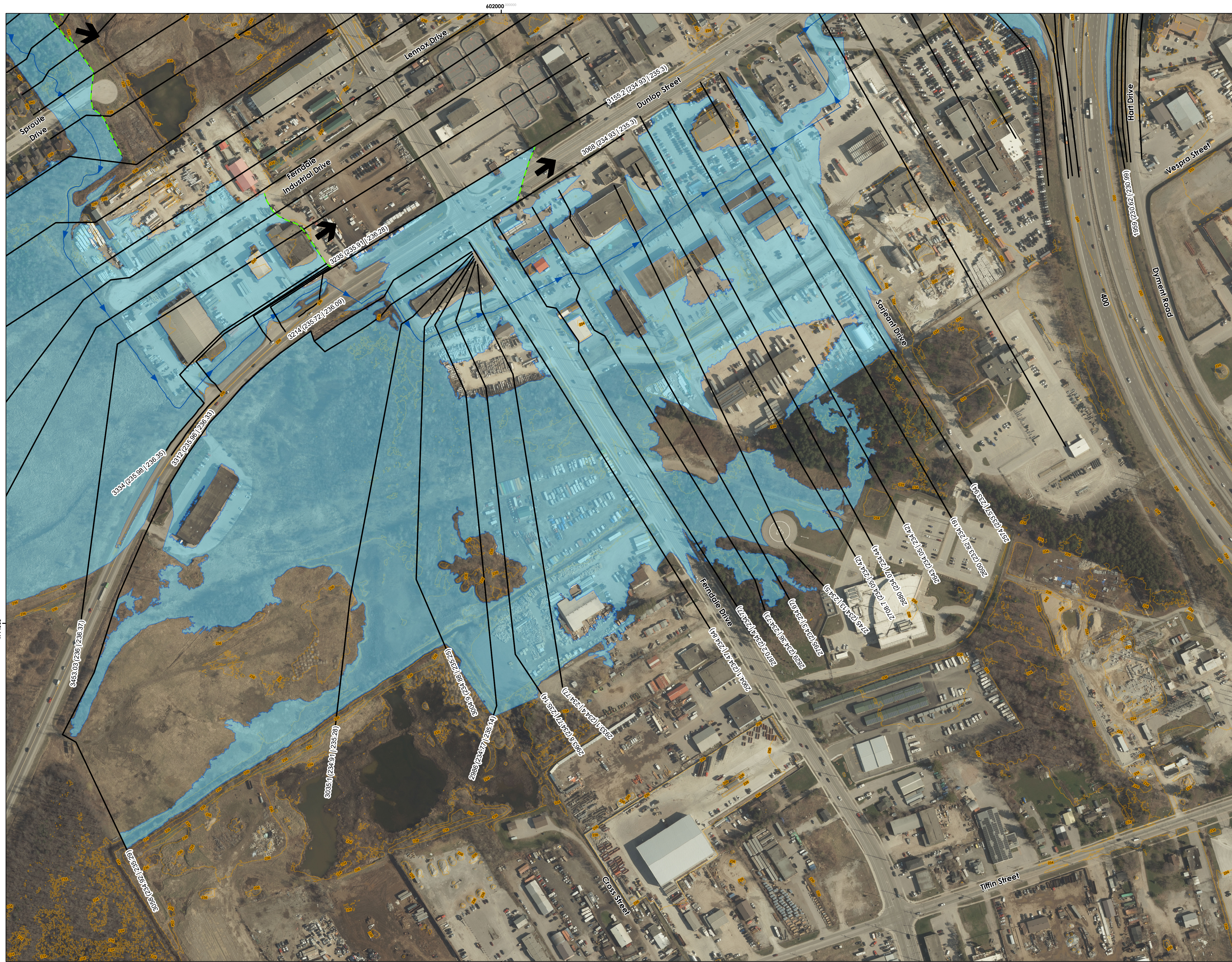
No.	Description	By	Date
0	DRAFT SUBMISSION TO LSRC	KS	2/14/24
1	FIRST SUBMISSION FOR PROVINCIAL REVIEW	KS	2/15/24
2	FINAL SUBMISSION	KS	3/26/24

- Notes:**
- Modeled in ArcMap 10.7, HEC-RAS Version 6.3.1.
 - All units are metric and in meters unless otherwise specified.
 - Aerial imagery from Barrie 2022.
 - Regulatory Event for Dyments Creek is Hurricane Hazel.



	D.M. Wills Associates Limited 150 Jameson Drive Peterborough, Ontario K9J 0B9	Engineer: KS/SO
	P. 705.742.2297 F. 705.741.3568 E. wills@dmwills.com	Designed By: SO
		Checked By: KS
		Date: 3/26/24
		Project No. 23-5611
		Map File No. Final FPM

**DYMENTS CREEK
REGULATORY FLOODLINE LIMITS**
 Lake Simcoe Region Conservation Authority
 City of Barrie
 DYMENTS CREEK FIGURE 2.4



Legend

- Flood Limit
- Cross Section - Station (Floodline Elevation) (CGVD2013 | CGVD28:78)
- Cross Section (Local Surface Model) - Station (Floodline Elevation) (CGVD2013 | CGVD28:78)
- 2m Elevation Contour
- Floodplain Spill
- Spill

Scale:
ANSI D (22x34): 1:2000

North Arrow:
True North
NAD83 UTM
Zone 17 North
CGVD 2013

Scale Bar:
0 25 50 100 150 200 Meters

Revisions

No.	Description	By	Date
0	DRAFT SUBMISSION TO LSRCA	KS	2/14/24
1	FIRST SUBMISSION FOR PROVINCIAL REVIEW	KS	2/15/24
2	FINAL SUBMISSION	KS	3/26/24

Notes:

- Modeled in ArcMap 10.7, HEC-RAS Version 6.3.1.
- All units are metric and in meters unless otherwise specified.
- Aerial imagery from Barrie 2022.
- Regulatory Event for Dyments Creek is Hurricane Hazel.



WILLS

D.M. Wills Associates Limited
150 Jameson Drive
Peterborough, Ontario
K9J 0B9

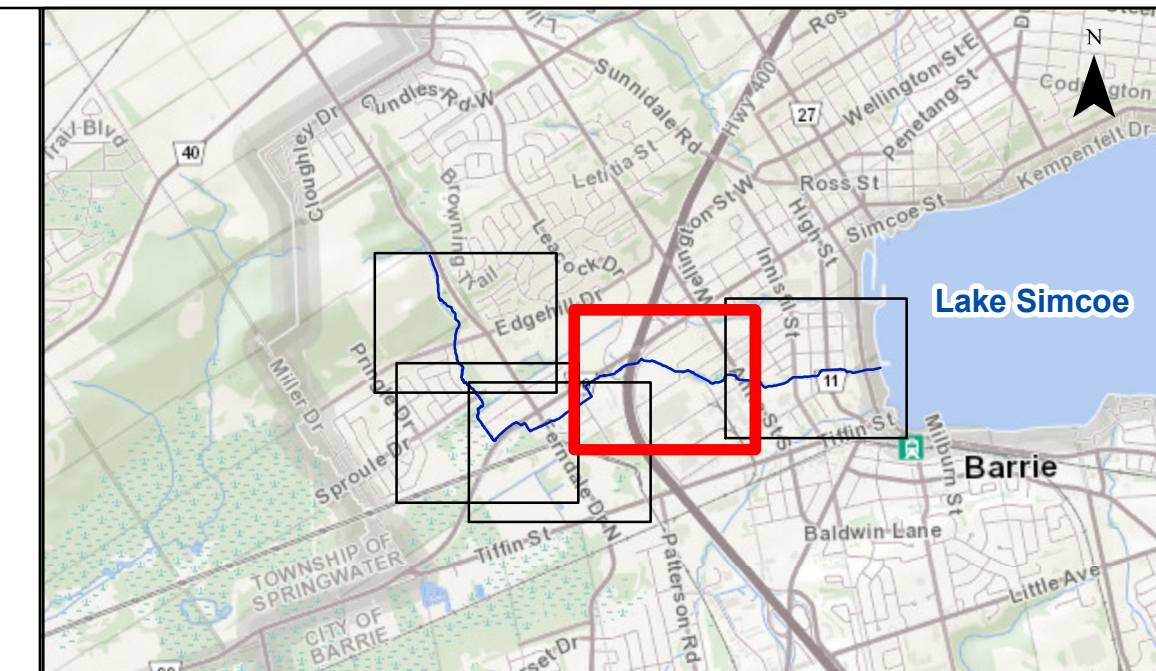
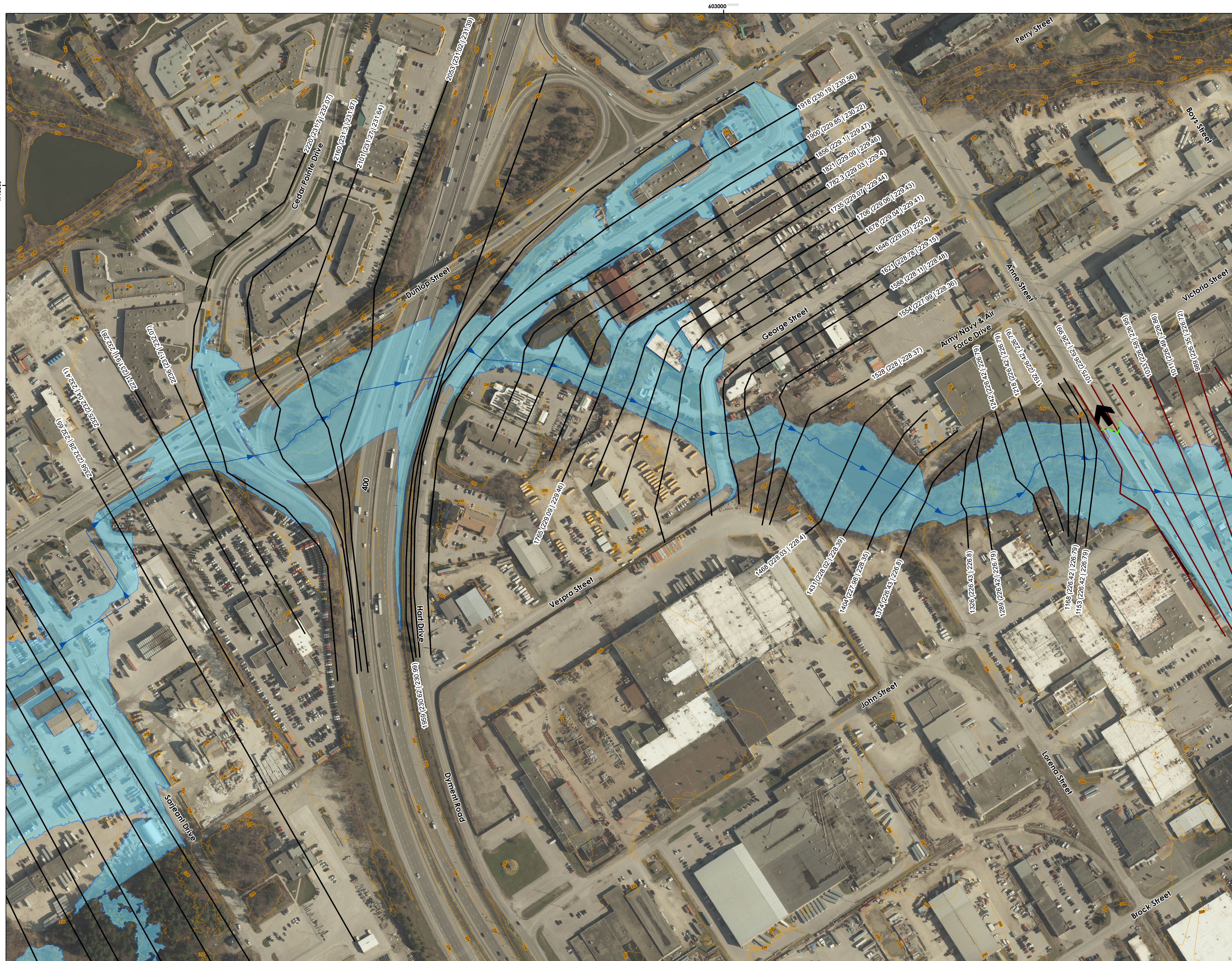
P. 705.742.2297
F. 705.741.3568
E. wills@dmwills.com

Engineer: KS/SO
Designed By: SO
Checked By: KS
Date: 3/26/24
Project No. 23-5611
Map File No. Final FPM

**DYMENTS CREEK
REGULATORY FLOODLINE LIMITS**

Lake Simcoe Region Conservation Authority
City of Barrie

DYMENTS CREEK FIGURE 3.4



Legend

- Flood Limit
- Cross Section - Station (Floodline Elevation) (CGVD2013 | CGVD28:78)
- Cross Section (Local Surface Model) - Station (Floodline Elevation) (CGVD2013 | CGVD28:78)
- 2m Elevation Contour
- Floodplain Spill
- Spill

Scale:
ANSI D (22x34): 1:2000

North Arrow:
True North
NAD83 UTM Zone 17 North
CGVD 2013

Scale Bar:
0 25 50 100 150 200 Meters
1:2,000

Revisions

No.	Description	By	Date
0	DRAFT SUBMISSION TO LSRC	KS	2/14/24
1	FIRST SUBMISSION FOR PROVINCIAL REVIEW	KS	2/15/24
2	FINAL SUBMISSION	KS	3/26/24

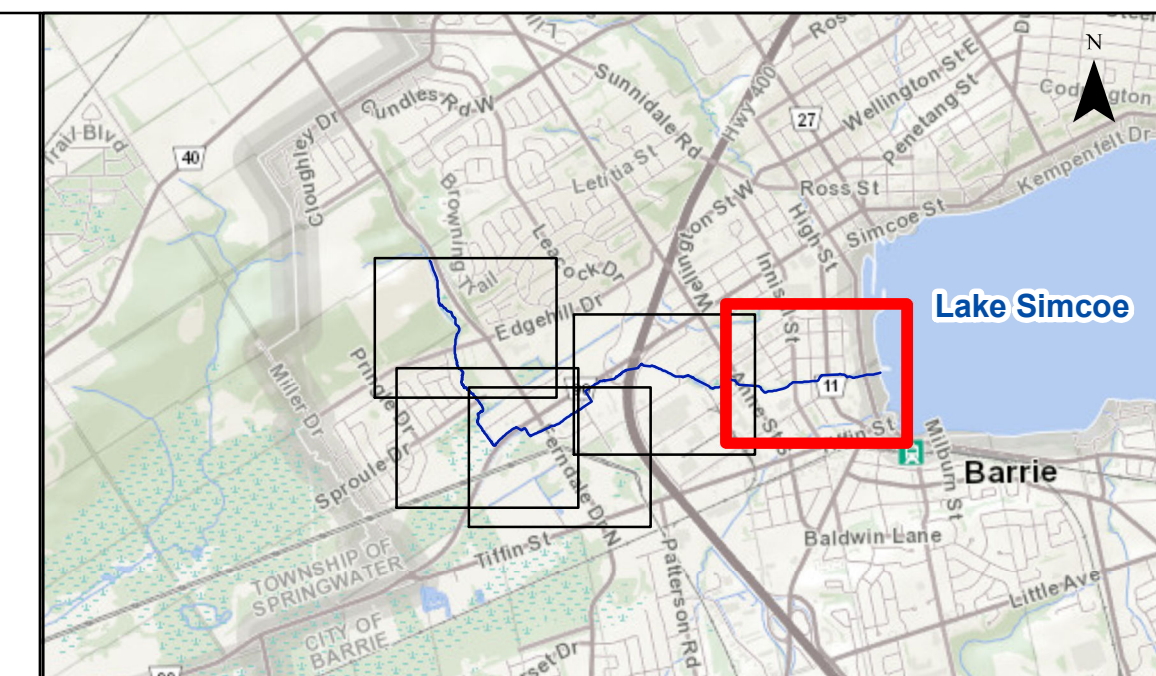
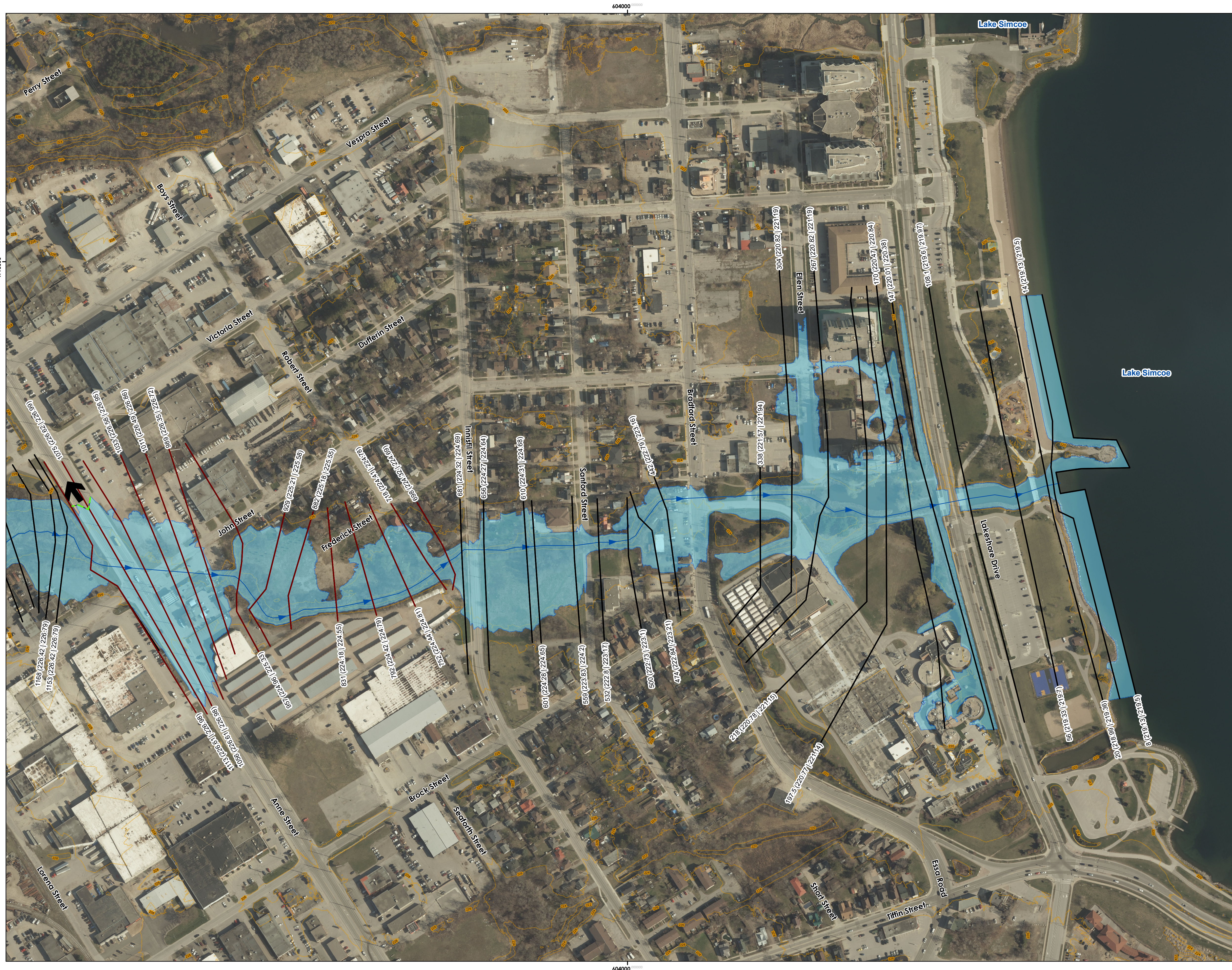
Notes:

- Modeled in ArcMap 10.7, HEC-RAS Version 6.3.1.
- All units are metric and in meters unless otherwise specified.
- Aerial imagery from Barrie 2022.
- Regulatory Event for Dyments Creek is Hurricane Hazel.



	D.M. Wills Associates Limited 150 Jameson Drive Peterborough, Ontario K9J 0B9	Engineer: KS/SO
	P. 705.742.2297 F. 705.741.3568 E. wills@dmwills.com	Designed By: SO
		Checked By: KS
		Date: 3/26/24
		Project No. 23-5611
		Map File No. Final FPM

**DYMENTS CREEK
REGULATORY FLOODLINE LIMITS**
 Lake Simcoe Region Conservation Authority
 City of Barrie
DYMENTS CREEK FIGURE 4.4



Legend

- Flood Limit
- Cross Section - Station (Floodline Elevation) (CGVD2013 | CGVD28:78)
- Cross Section (Local Surface Model) - Station (Floodline Elevation) (CGVD2013 | CGVD28:78)
- 2m Elevation Contour
- Floodplain Spill
- Spill

Scale:
ANSI D (22x34): 1:2000

North Arrow:
True North
NAD83 UTM Zone 17 North
CGVD 2013

Scale:
0 25 50 100 150 200
Meters

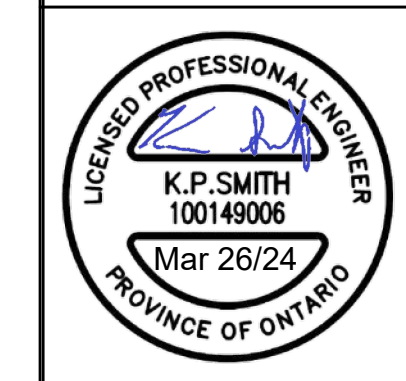
1:2,000

Revisions

No.	Description	By	Date
0	DRAFT SUBMISSION TO LSRC	KS	2/14/24
1	FIRST SUBMISSION FOR PROVINCIAL REVIEW	KS	2/15/24
2	FINAL SUBMISSION	KS	3/26/24

Notes:

- Modeled in ArcMap 10.7, HEC-RAS Version 6.3.1.
- All units are metric and in meters unless otherwise specified.
- Aerial imagery from Barrie 2022.
- Regulatory Event for Dyments Creek is Hurricane Hazel.



WILLS

D.M. Wills Associates Limited
150 Jameson Drive
Peterborough, Ontario
K9J 0B9

P. 705.742.2297
F. 705.741.3568
E. wills@dmwills.com

Engineer: KS/SO
Designed By: SO
Checked By: KS
Date: 3/26/24
Project No. 23-5611
Map File No. Final FPM

**DYMENTS CREEK
REGULATORY FLOODLINE LIMITS**

Lake Simcoe Region Conservation Authority
City of Barrie

DYMENTS CREEK FIGURE 5.4