

**Legend**

- Flood Limit
- Cross Section - Station (Floodline Elevation) (CGVD2013 | CGVD28:78)
- 2m Elevation Contour
- Floodplain Spill
- Spill

**North Arrow**  
 True North  
 NAD83 UTM Zone 17 North  
 CGVD 2013  
 Scales:  
 ANS I D (22x34): 1:2000

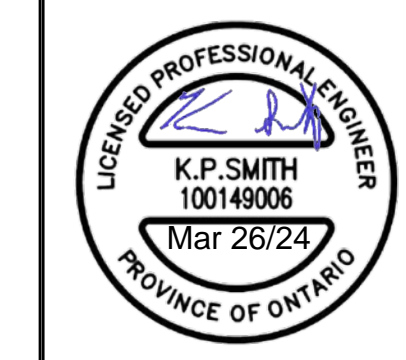
**Scale**  
 0 25 50 100 150 200  
 Meters  
 1:2,000

**Revisions**

No.	Description	By	Date
0	DRAFT SUBMISSION TO LSRC	KS	2/13/24
1	FIRST SUBMISSION FOR PROVINCIAL REVIEW	KS	2/15/24
2	FINAL SUBMISSION	KS	3/22/24

**Notes:**

- Modeled in ArcMap 10.7, HEC-RAS Version 6.3.1.
- All units are metric and in meters unless otherwise specified.
- Aerial imagery from Barrie 2022.
- Regulatory Event for Whiskey Creek is Hurricane Hazel.



**WILLS**

D.M. Wills Associates Limited  
 150 Jameson Drive  
 Peterborough, Ontario  
 K9J 0B9  
 P. 705.742.2297  
 F. 705.741.3568  
 E. wills@dmwills.com

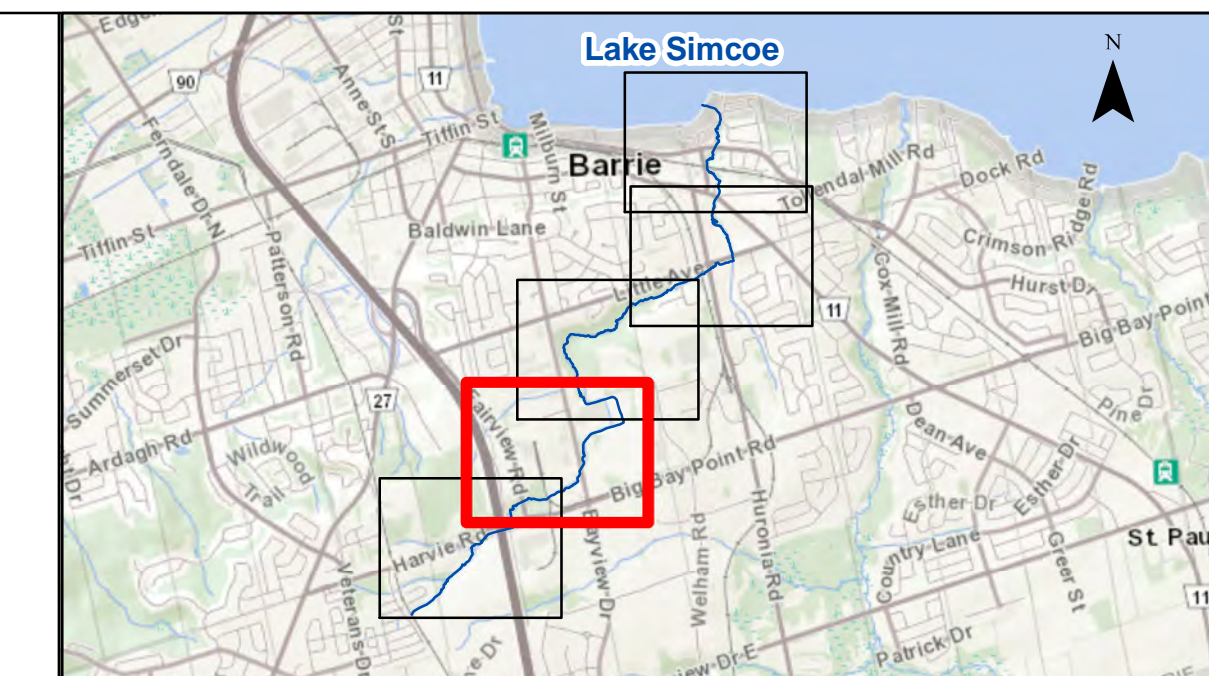
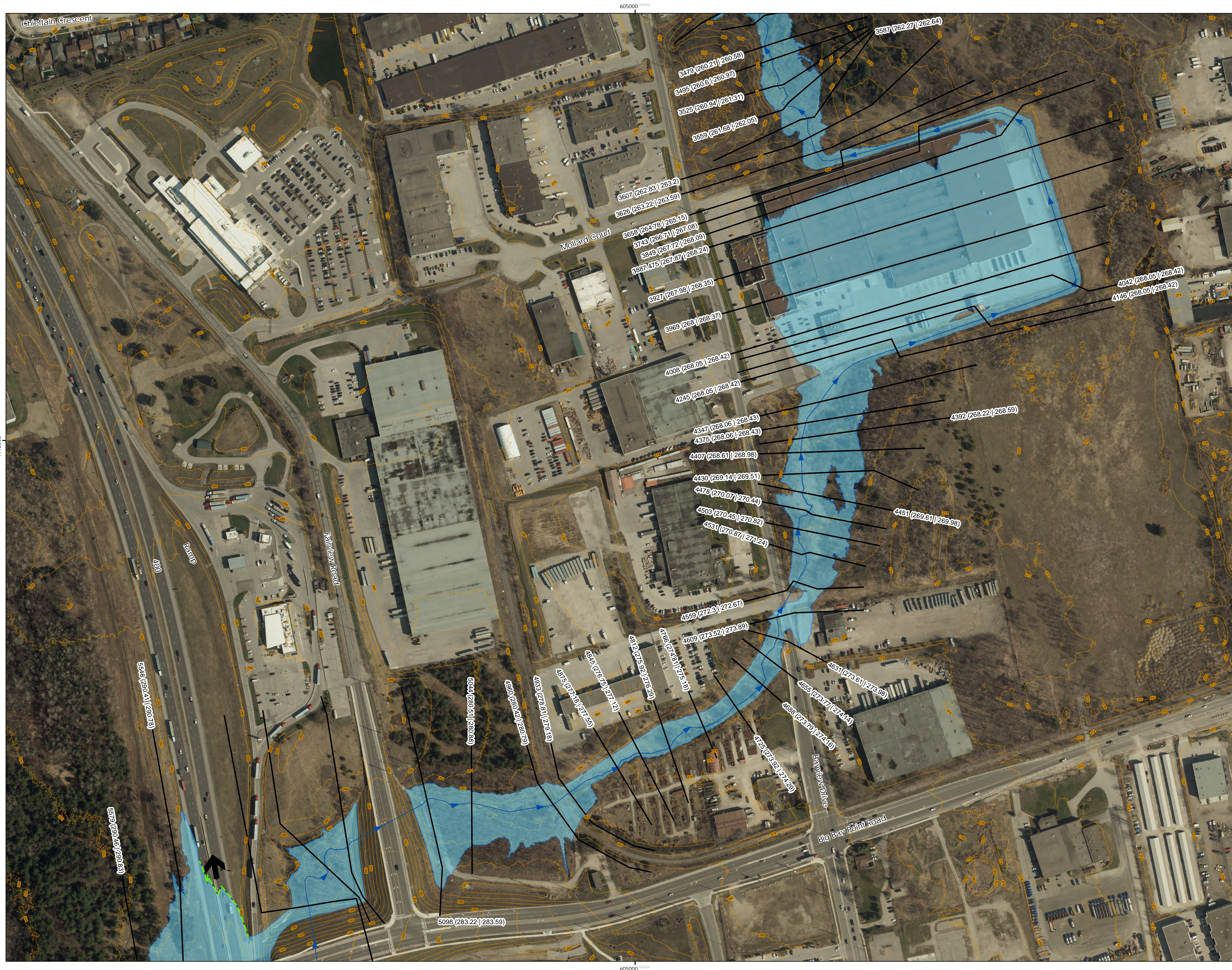
Engineer: KS/SO  
 Designed By: SO  
 Checked By: KS  
 Date: 3/22/24  
 Project No. 23-5611  
 Map File No. Final FPM

**WHISKEY CREEK  
 REGULATORY FLOODLINE LIMITS**

Lake Simcoe Region Conservation Authority  
 City of Barrie

WHISKEY CREEK FIGURE 1.4





**Legend**

- Flood Limit
- Cross Section - Station (Floodline Elevation) (CGVD2013 | CGVD2878)
- 2m Elevation Contour
- Floodplain Spill
- Spill

**North Arrow**  
 True North  
 NAD83 UTM  
 Zone 17 North  
 CGVD 2013  
 Scales:  
 ANSI D  
 (22x34): 1:2000

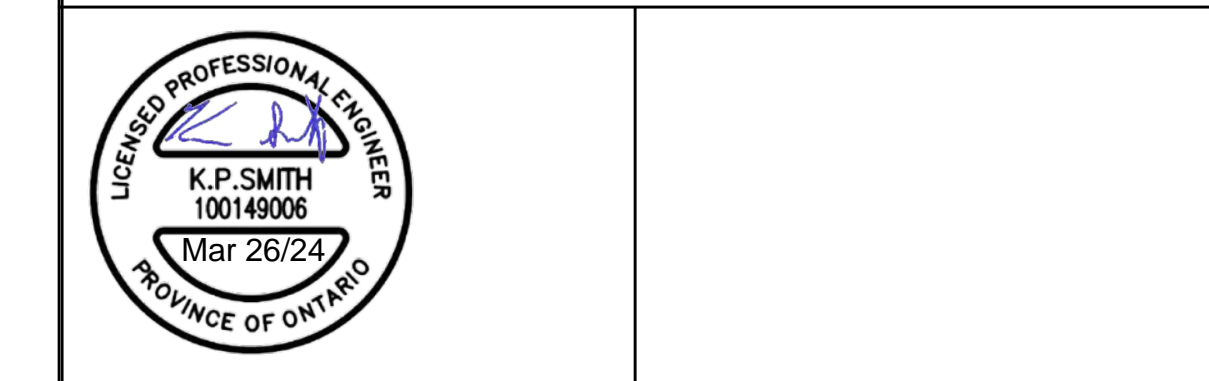
**Scale**  
 0 25 50 100 150 200  
 Meters  
 1:2,000

**Revisions**

No.	Description	By	Date
0	DRAFT SUBMISSION TO LSRCA	KS	2/13/24
1	FIRST SUBMISSION FOR PROVINCIAL REVIEW	KS	2/15/24
2	FINAL SUBMISSION	KS	3/22/24

**Notes:**

- Modeled in ArcMap 10.7, HEC-RAS Version 6.3.1.
- All units are metric and in meters unless otherwise specified.
- Aerial imagery from Barrie 2022.
- Regulatory Event for Whiskey Creek is Hurricane Hazel.



**WILLS**

D.M. Wills Associates Limited  
 150 Jameson Drive  
 Peterborough, Ontario  
 K9J 0B9  
 P. 705.742.2297  
 F. 705.741.3568  
 E. wills@dmwills.com

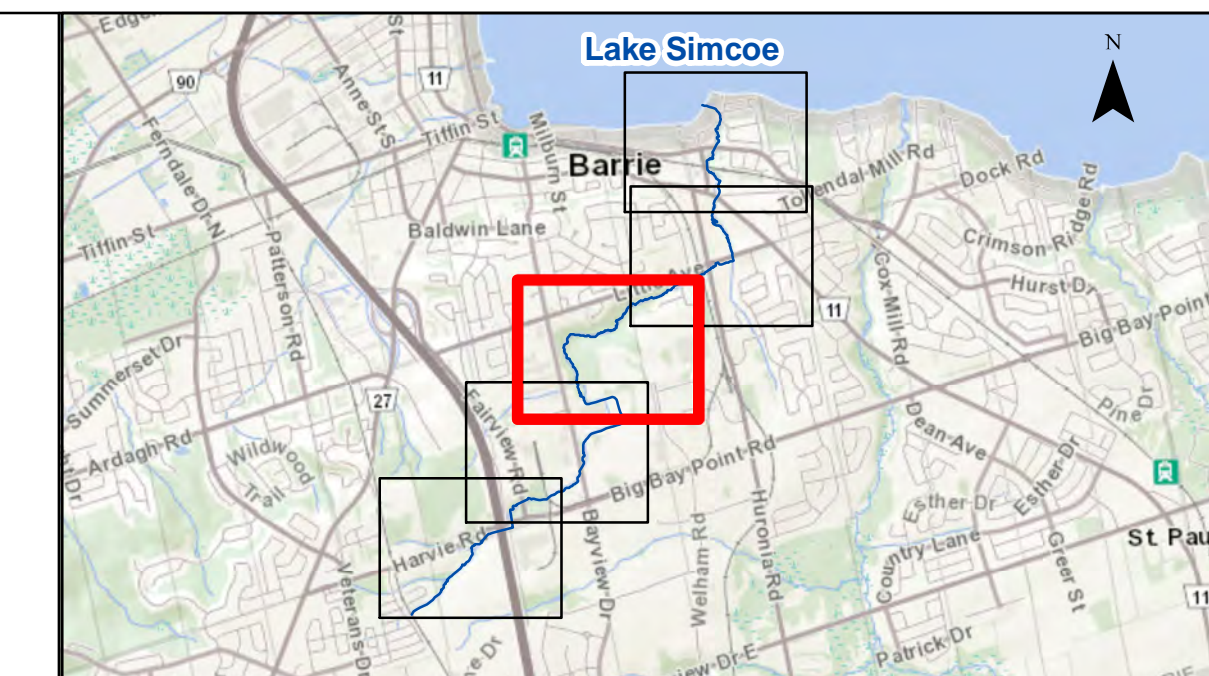
Engineer: KS/SO  
 Designed By: SO  
 Checked By: KS  
 Date: 3/22/24  
 Project No. 23-5611  
 Map File No. Final FPM

**WHISKEY CREEK  
 REGULATORY FLOODLINE LIMITS**

Lake Simcoe Region Conservation Authority  
 City of Barrie

WHISKEY CREEK FIGURE 2.4





**Legend**

- Flood Limit
- Cross Section - Station (Floodline Elevation) (CGVD2013 | CGVD28:78)
- 2m Elevation Contour
- Floodplain Spill
- Spill

**Scale**  
0 25 50 100 150 200 Meters  
1:2,000

**North Arrow**  
N  
True North  
NAD83 UTM  
Zone 17 North  
CGVD 2013  
Scales:  
ANSI D  
(22x34): 1:2000

**Revisions**

No.	Description	By	Date
0	DRAFT SUBMISSION TO LSRCA	KS	2/13/24
1	FIRST SUBMISSION FOR PROVINCIAL REVIEW	KS	2/15/24
2	FINAL SUBMISSION	KS	3/22/24

**Notes:**

- Modeled in ArcMap 10.7, HEC-RAS Version 6.3.1.
- All units are metric and in meters unless otherwise specified.
- Aerial imagery from Barrie 2022.
- Regulatory Event for Whiskey Creek is Hurricane Hazel.

D.M. Wills Associates Limited  
150 Jameson Drive  
Peterborough, Ontario  
K9J 0B9

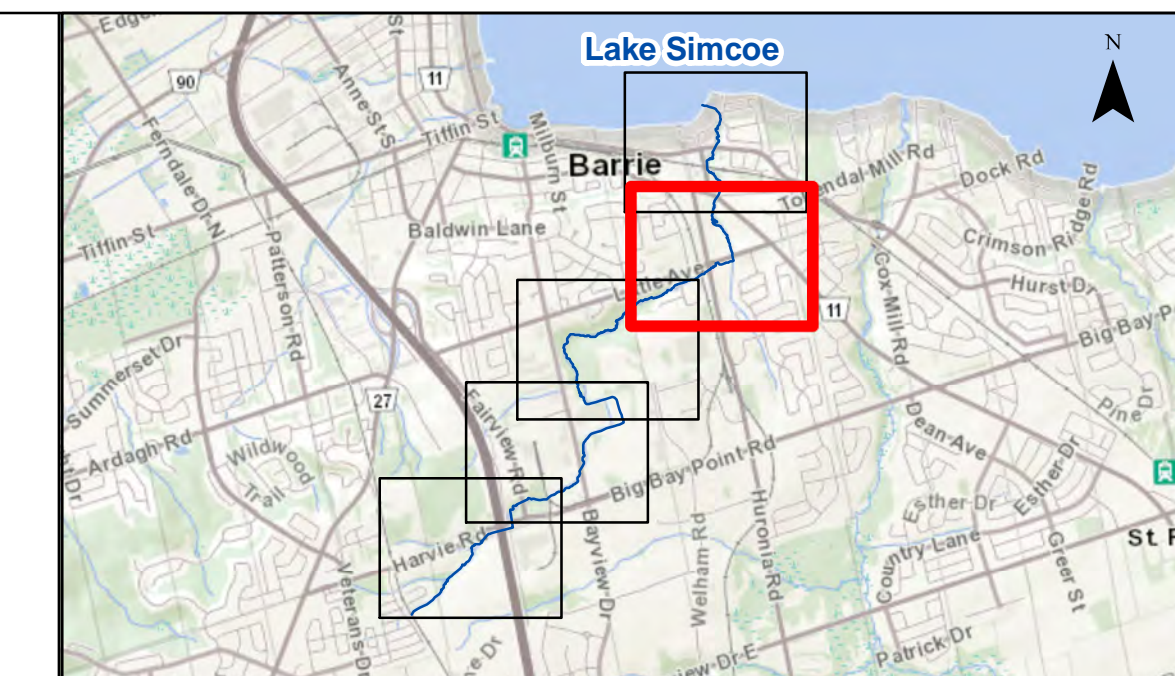
P. 705.742.2297  
F. 705.741.3568  
E. wills@dmwills.com

Engineer: KS/SO  
Designed By: SO  
Checked By: KS  
Date: 3/22/24  
Project No. 23-5611  
Map File No. Final FPM

**WHISKEY CREEK  
REGULATORY FLOODLINE LIMITS**  
Lake Simcoe Region Conservation Authority  
City of Barrie

WHISKEY CREEK FIGURE 3.4





**Legend**

- Flood Limit
- Cross Section - Station (Floodline Elevation) (CGVD2013 | CGVD28.78)
- 2m Elevation Contour
- Floodplain Spill
- Spill

**North Arrow**  
True North  
NAD83 UTM Zone 17 North  
CGVD 2013  
Scale: ANS I D (22x34): 1:2000

**Scale**  
0 25 50 100 150 200 Meters  
1:2,000

**Revisions**

No.	Description	By	Date
0	DRAFT SUBMISSION TO LSRCA	KS	2/13/24
1	FIRST SUBMISSION FOR PROVINCIAL REVIEW	KS	2/15/24
2	FINAL SUBMISSION	KS	3/22/24

**Notes:**

- Modeled in ArcMap 10.7, HEC-RAS Version 6.3.1.
- All units are metric and in meters unless otherwise specified.
- Aerial imagery from Barrie 2022.
- Regulatory Event for Whiskey Creek is Hurricane Hazel.



**WILLS**

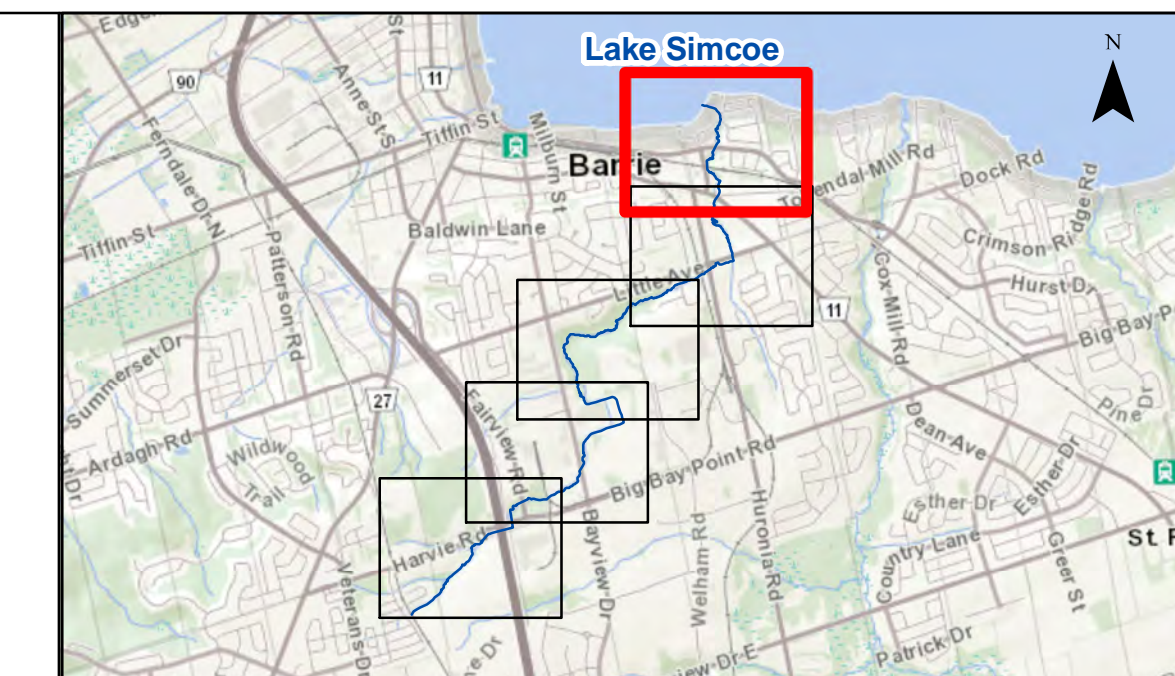
D.M. Wills Associates Limited  
150 Jameson Drive  
Peterborough, Ontario  
K9J 0B9  
P. 705.742.2297  
F. 705.741.3568  
E. wills@dmwills.com

Engineer: KS/SO  
Designed By: SO  
Checked By: KS  
Date: 3/22/24  
Project No. 23-5611  
Map File No. Final FPM

**WHISKEY CREEK  
REGULATORY FLOODLINE LIMITS**  
Lake Simcoe Region Conservation Authority  
City of Barrie

WHISKEY CREEK FIGURE 4.4





**Legend**

- Flood Limit
- Cross Section - Station (Floodline Elevation) (CGVD2013 | CGVD28:78)
- 2m Elevation Contour
- Floodplain Spill
- Spill

**North Arrow**  
True North  
NAD83 UTM  
Zone 17 North  
CGVD 2013  
Scales:  
ANSI D  
(22x34): 1:2000

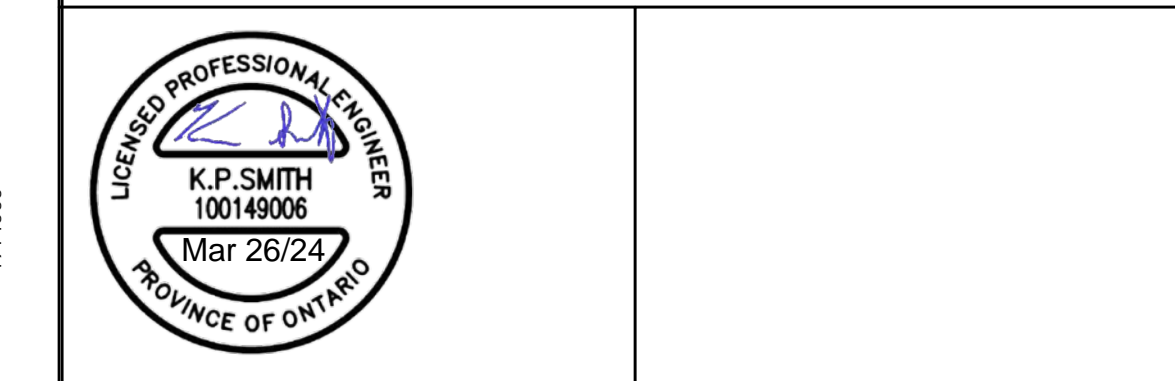
**Scale**  
0 25 50 100 150 200  
Meters  
1:2,000

**Revisions**

No.	Description	By	Date
0	DRAFT SUBMISSION TO LSRCA	KS	2/13/24
1	FIRST SUBMISSION FOR PROVINCIAL REVIEW	KS	2/15/24
2	FINAL SUBMISSION	KS	3/22/24

**Notes:**

1. Modeled in ArcMap 10.7, HEC-RAS Version 6.3.1.
2. All units are metric and in meters unless otherwise specified.
3. Aerial imagery from Barrie 2022.
4. Regulatory Event for Whiskey Creek is Hurricane Hazel.



**WILLS**

D.M. Wills Associates Limited  
150 Jameson Drive  
Peterborough, Ontario  
K9J 0B9  
P. 705.742.2297  
F. 705.741.3568  
E. wills@dmwills.com

Engineer: KS/SO  
Designed By: SO  
Checked By: KS  
Date: 3/22/24  
Project No. 23-5611  
Map File No. Final FPM

**WHISKEY CREEK  
REGULATORY FLOODLINE LIMITS**

Lake Simcoe Region Conservation Authority  
City of Barrie

WHISKEY CREEK FIGURE 5.4