

# LSRCA Regulation Mapping Update

LSRCA Board of Directors

May 24, 2024

Ashlea Brown, Director Development  
Services

Darren Campbell, GIS Coordinator



**Lake Simcoe Region**  
conservation authority



Member of Conservation Ontario

# Overview

- On April 1, 2024, previously un-proclaimed sections of the Conservation Authorities Act and Ontario Regulation 41/24 'Prohibited Activities, Exemptions and Permits' came into effect.
- Section 4 of the Regulation, outlines specific requirements for mapping regulated areas including:
  - ✓ Produce regulatory maps, file them digitally at the head office of the Authority.
  - ✓ Have regulatory maps on our website.
  - ✓ Review maps at least once annually and update if required. Target date of April 1<sup>st</sup> annually for updates,
  - ✓ Notify stakeholders, municipalities and the public of any significant updates to the regulated areas, including making relevant information available online a minimum of 30 days prior to the Authority's meeting during which the proposed changes are on the agenda; and,
  - ✓ Significant changes noted above shall be promptly updated to the maps.



# Updates

- Updates to regulated areas as defined in the new sections of the Act and Regulation:
  - Reduction in the areas we regulate around wetlands
  - Change in the definition of watercourse
  - Changes to the setback distance of slope erosion hazards
- Shoreline hazard update; previous study was from 1981.



# Results

Overall decrease in the total amount of regulated area by 7,559.81 ha.

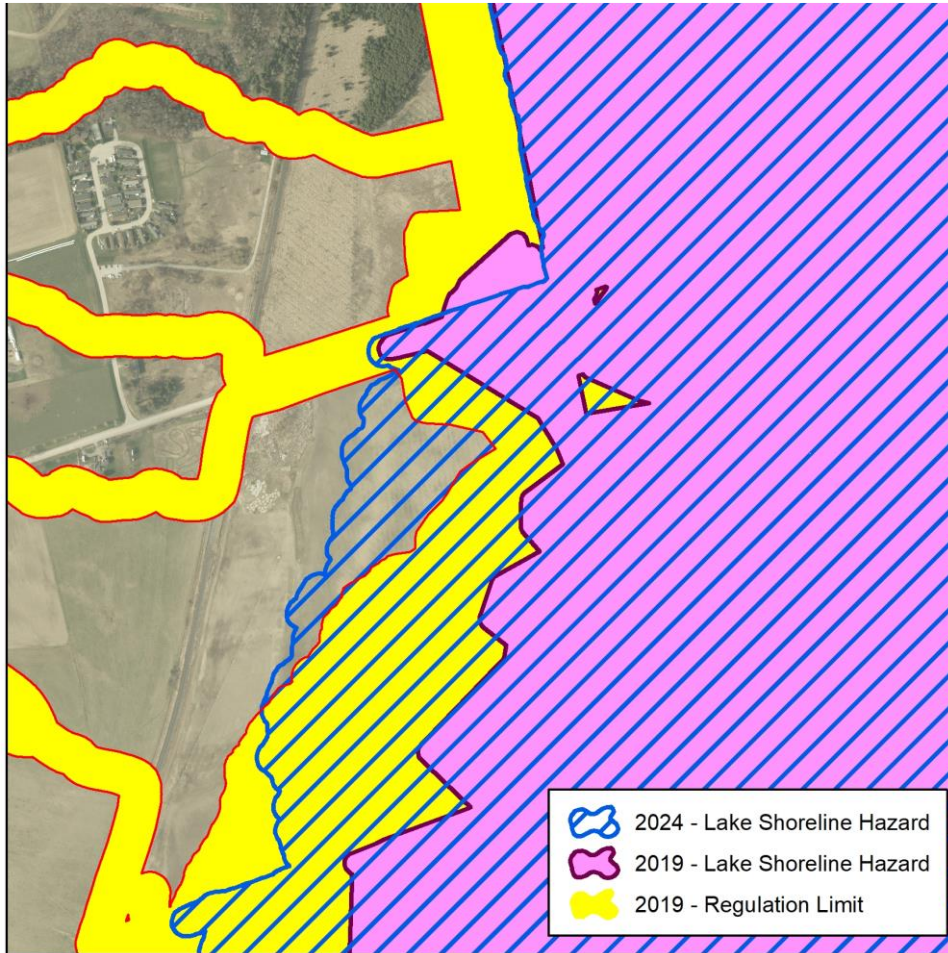


# Wetland

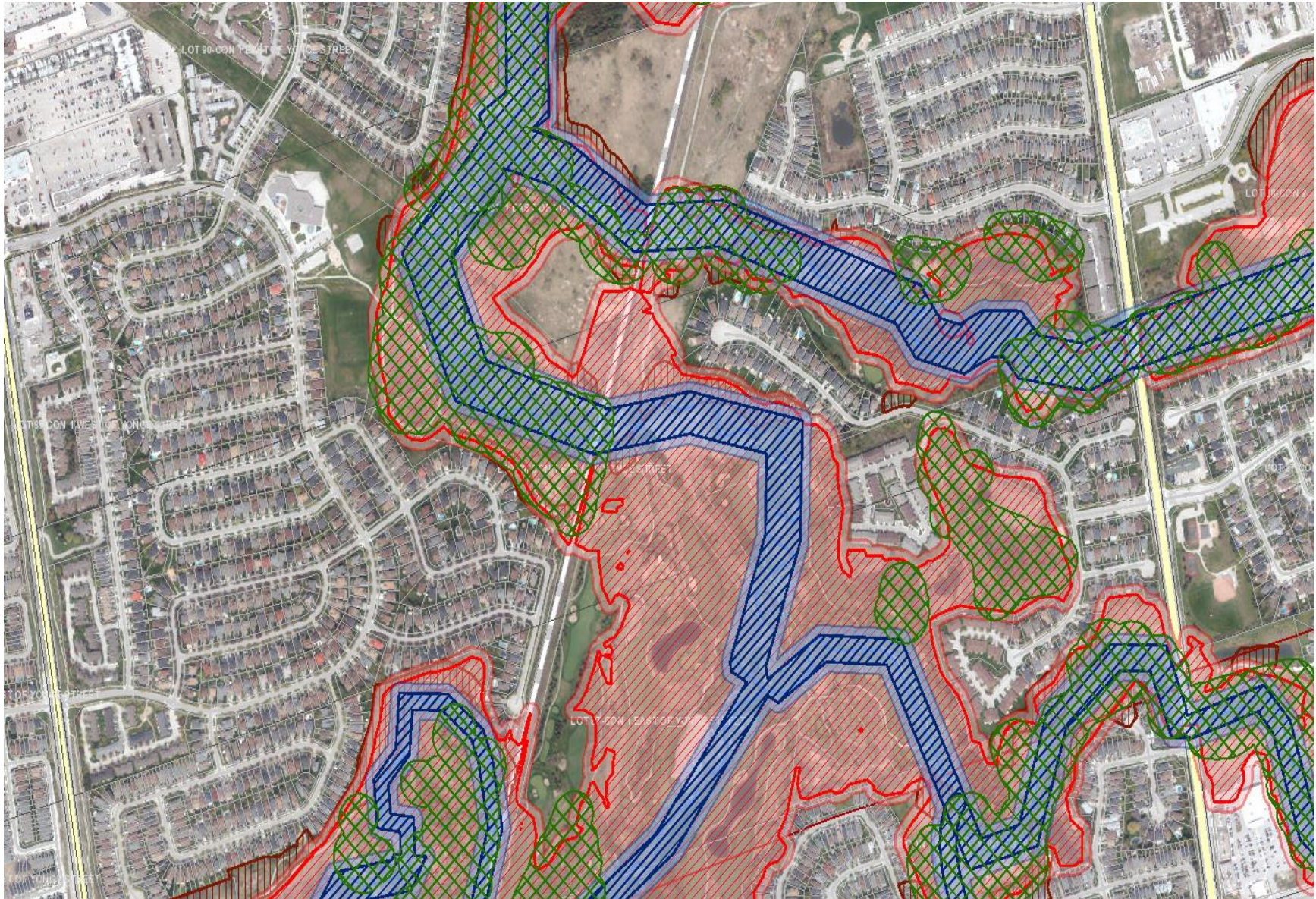
- Adjacent land decreased from 120 to 30 metres
- Wetland layer updated based on MNRF mapping
- Decrease in regulated area of 10,160 ha



# Shoreline



- New shoreline study complete 2024 replaced the 1981 study.
- Increase in regulated area of 1,417 ha



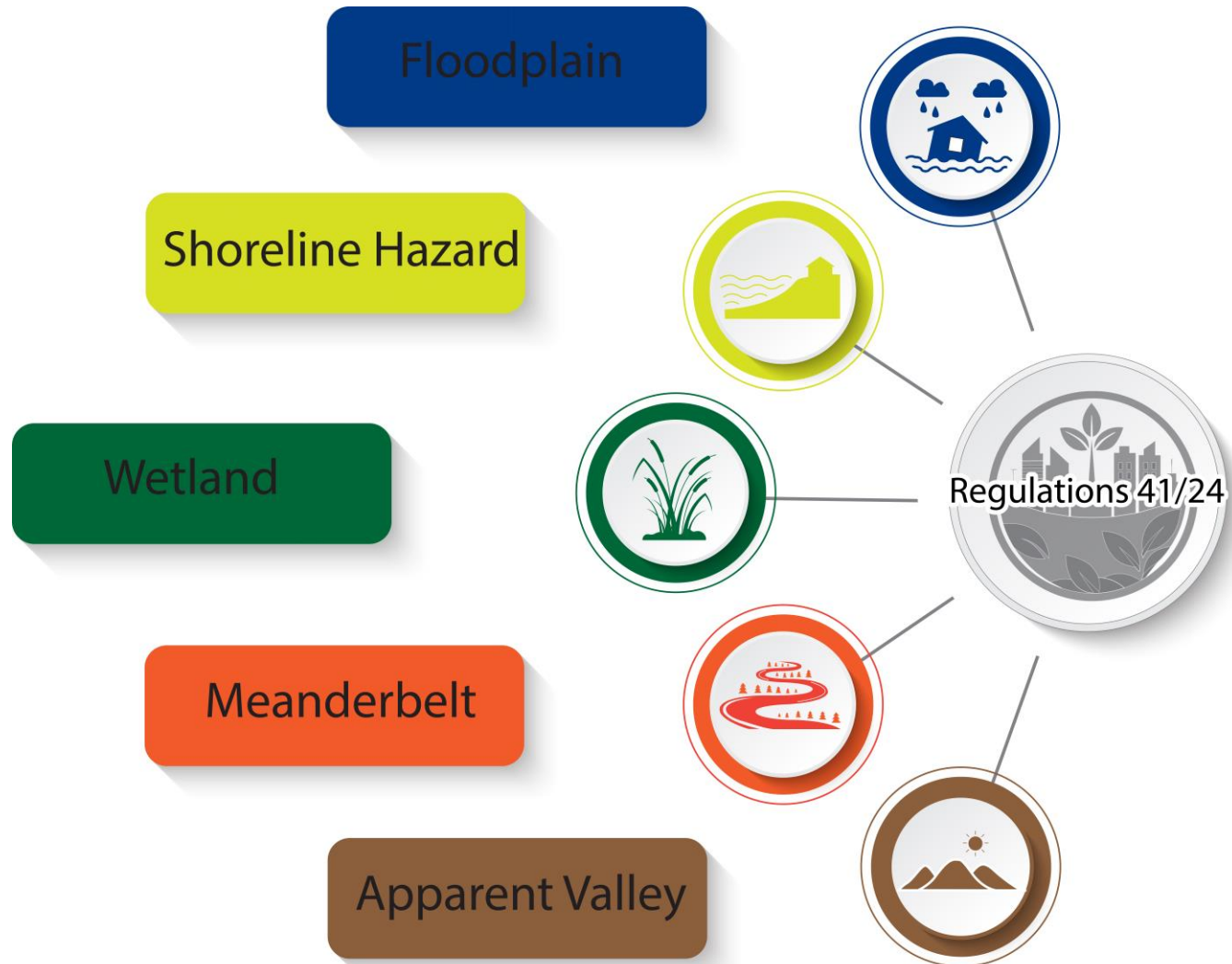
# GIS Departments Role

- Create data
- Analysis
- Visualize
- Accessible

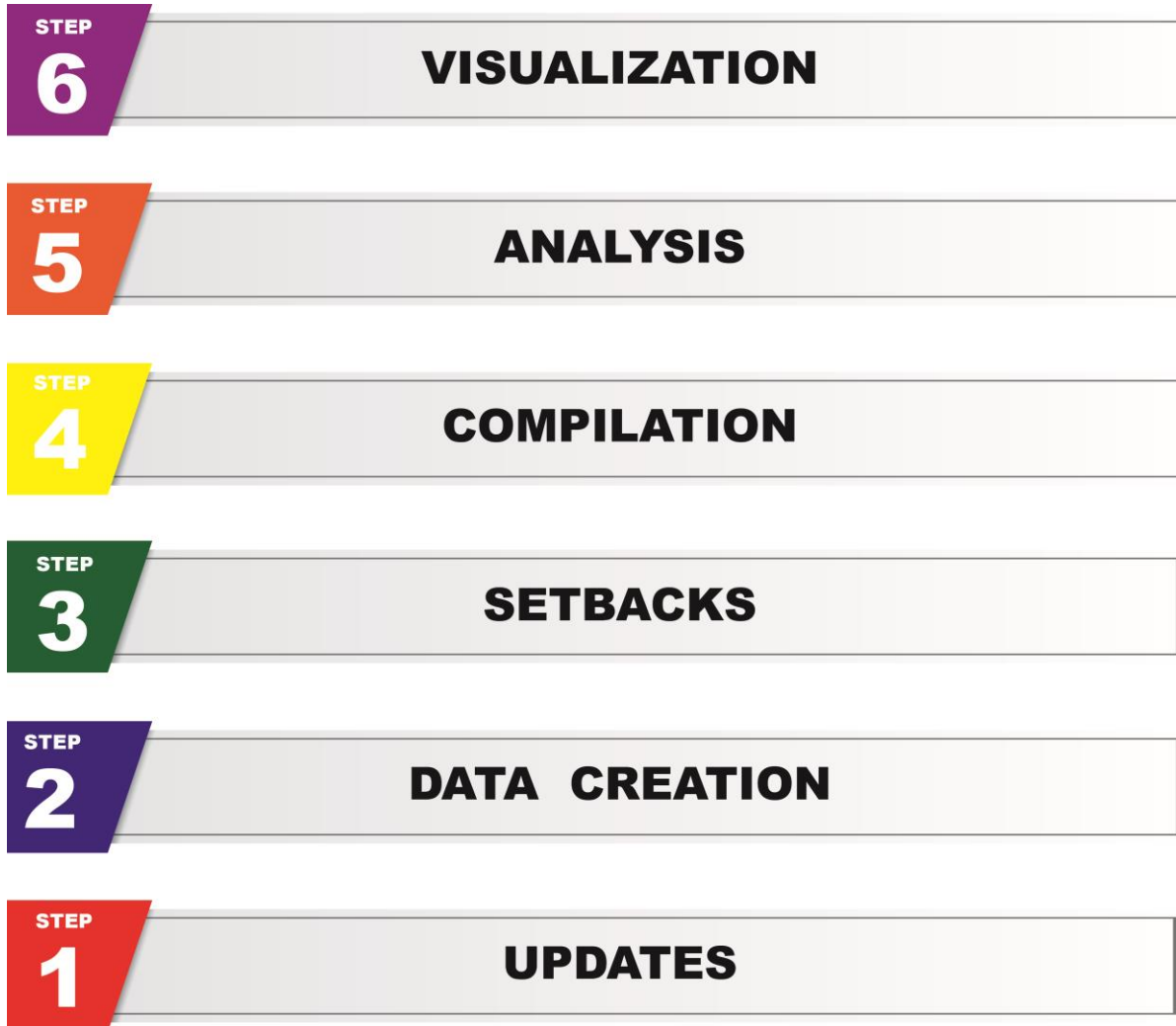




# GIS Data Inputs



# GIS Update Process



# Data Access



**LSRCA  
Staff**



**Municipal  
Partners**



**Public**

# Data Access



# Questions

