

# Lake Simcoe Conservation Preserve: Incorporating Traditional Knowledge & Comprehensive Stewardship Plan

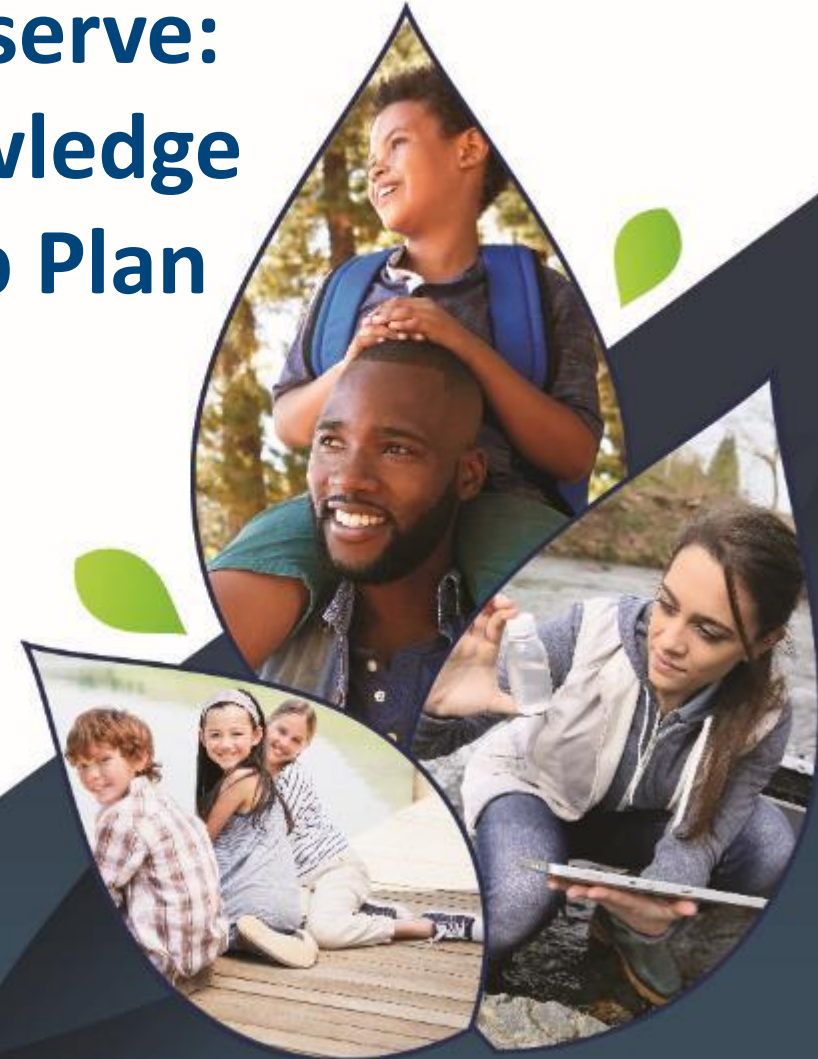
Board of Directors

July 25, 2025

Lauren Grzywniak, Land Management Technician



**Lake Simcoe Region**  
conservation authority



# Overview

- Property Overview
- Activities Completed to Date
- Two-eyed Seeing – Incorporating Traditional Knowledge
- Land Relationship Visioning Project
- Comprehensive Stewardship Plan Creation
- Next Steps

# Lake Simcoe Conservation Preserve



# Activities Completed to Date

- Property Management
  - Land survey
  - Property closure
  - Ecological monitoring
  - Agricultural lease updates
- Property Studies
  - Baseline Documentation Report, Stewardship Plan, Opportunities and Constraints Mapping
  - Land Relationship Visioning Summary Report
    - June 2025



# Lake Simcoe Watershed First Nations

- Within traditional Williams Treaties (1923)
- Chippewas of Georgina Island First Nation
  - Closest Rights Holders
- Engaged Cambium Indigenous Professional Services
  - Property assessment
  - Community engagement



# Incorporating Traditional Ecological Knowledge

- Oral knowledge that is embedded within Indigenous ways of knowing
- Culturally based
- Place specific
- Holistic
- Includes long periods of observation
- Two-eyed seeing approach



# Land Relationship Visioning Traditional Ecological Knowledge

Project Workplan includes:

- Desktop Analysis
- Seasonal Site Investigations
- Indigenous Lens Mapping Application
- Knowledge Carriers Council



# Site Visits across 4-Seasons

- June, August, September, October, February
- Uses for various plants
  - Medicinal and culturally
- Sustainable harvesting
- History of different clans
- New perspective – New feeling



# Opportunities Discussed

- Traditional knowledge development within community
- Youth engagement
- Food security and traditional agriculture
- Medicine cultivation and preparation
- Ceremonial space
- Cultural engagement



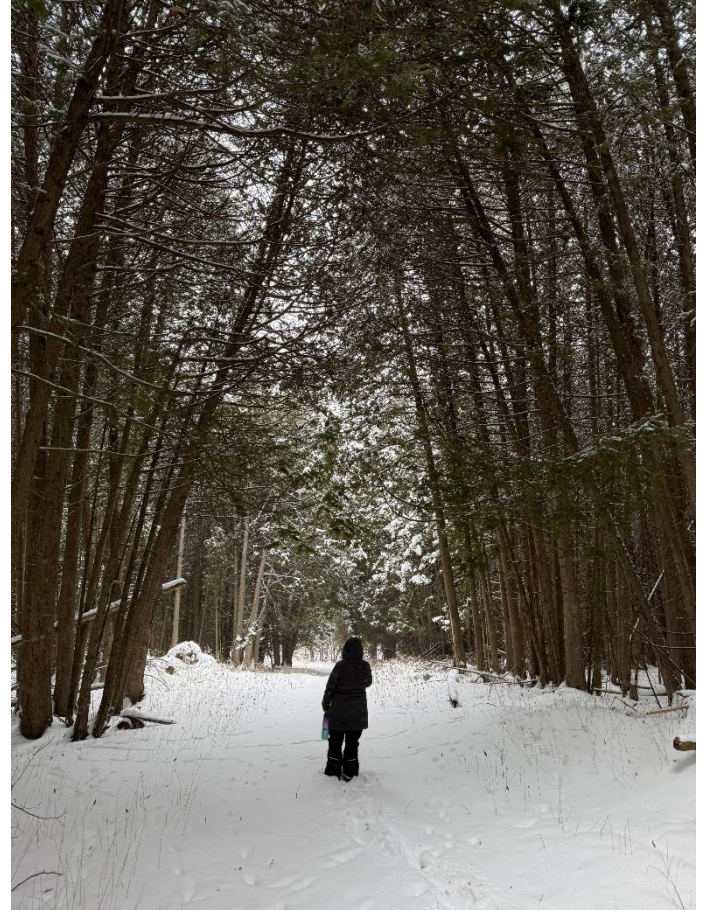
# Relationship Development

- Long-term engagement
- Focus on Rights Holders
- Building knowledge, understanding & awareness
- Beyond this project to inform other initiatives



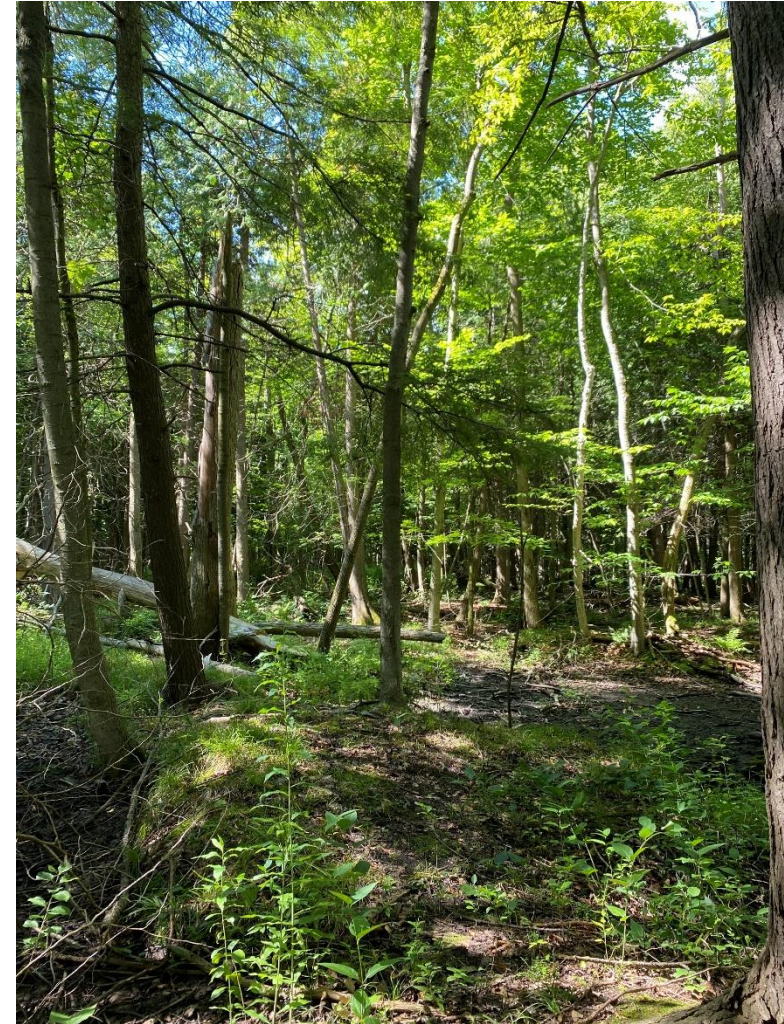
# Recommendations

- Continued relationship building
- Continued engagement and education for Community members
  - Including youth and schools
- Explore incorporation of language, history and knowledge
- Seek deeper understanding of proposed activities
  - Impacts on significant species/ spaces
  - Protocols for Indigenous access



# Comprehensive Stewardship Plan Creation

- Will outline property vision, permitted activities and inform ongoing management
- 20 to 25-year plan
- Greenspace Needs Assessment
- Consider:
  - Community interests
  - Financial feasibility
  - Natural heritage protection
    - Species & Spaces, Two-Eyed Seeing Lens



# Consultation/ Engagement Process

- Internal Project Team
- Advisory Committee
  - Georgina Island First Nations
  - Community (4)
  - Georgina (Council and Staff)
  - York Region (Staff)
  - Sector Representation
- Board Workshop
- Have Your Say engagement platform



# Project Timeline

Task	Timeline
Project Scoping and Initiation*	Q2, 2025: June/ July
Comprehensive Needs Assessment	Q4, 2025: July – November
Preliminary Land Stewardship Options*	Q1, 2026: January – February
Preferred Land Stewardship Plan*	Q2, 2026: March – April
Financial Feasibility Assessment	Q2, 2026: May
Review of Draft Comprehensive Plan	Q3, 2026: June
Comprehensive Plan Approval by Board of Directors*	Q3, 2026: September

\*Engagement opportunities with the Board (presentation or Workshop)

# Next Steps

- Finalization of Advisory Committee members
- Internal Project Team initial meeting
- RFP process for Needs Assessment
- Creation of multiple land stewardship options
- Update Opportunity & Constraints mapping
- Continued relationship with the Chippewas of Georgina Island First Nation



# Thank you

