

# Administrative Offices Permeable Parking Lot Retrofit

Board of Directors

September 26, 2025

Christa Sharp



**Lake Simcoe Region**  
conservation authority

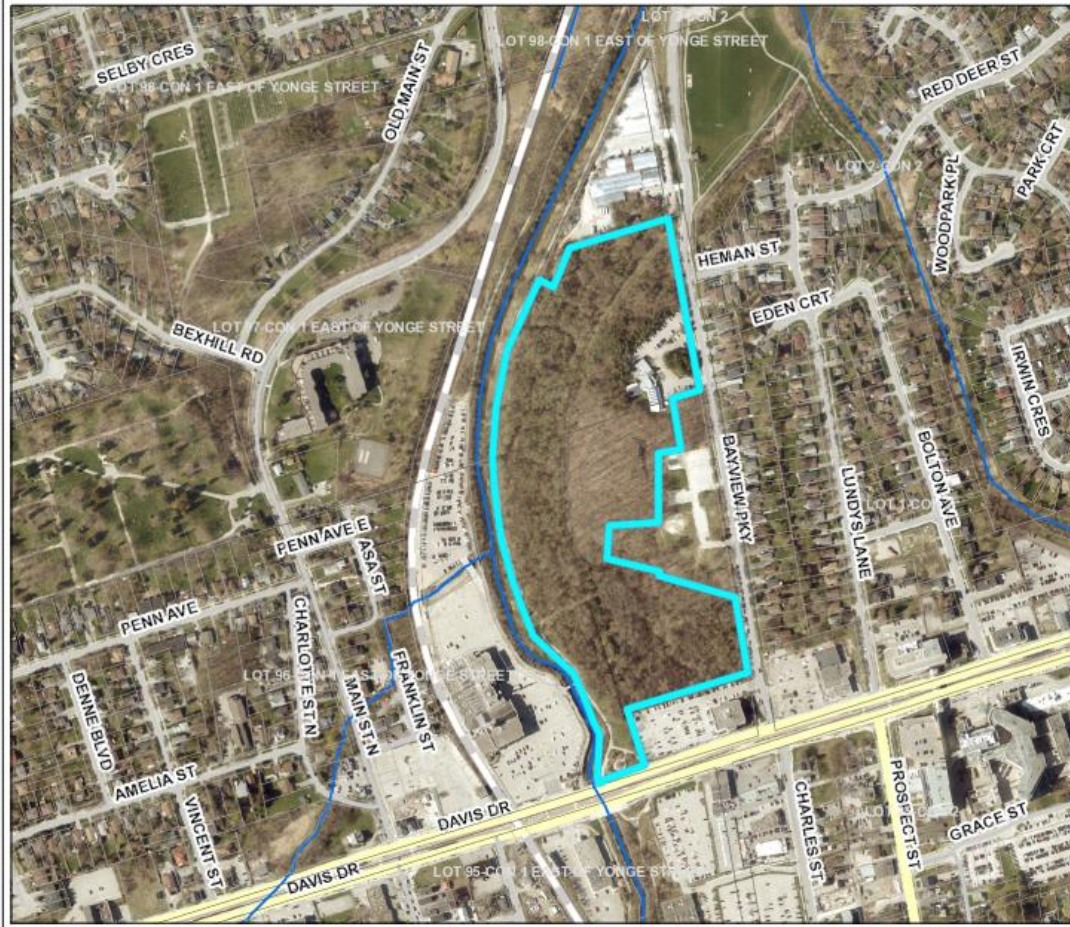


Member of Conservation Ontario

# Administrative Offices



APID 42092



## Features

- Areas of Pending Updates
- Assessment Parcel
- Lot and Concession
- Watercourse
- Lake Simcoe
- Roads**
  - Hwy 400 Series
  - Highway, Arterials
  - Local Road
- Railway
- Lower Tier Municipality

Printed On:  
4/11/2025

WGS 1984\_Web\_Mercator\_Auxiliary\_Sphere  
Mapped By:

This product was produced by the Lake Simcoe Region Conservation Authority and some information depicted on this map may have been compiled from various sources. While every effort has been made to accurately depict the information, data/mapping errors may exist. This map has been produced for illustrative purposes from an interactive web mapping site. LSRCA GIS Services DRAFT printed 2024. © LAKE SIMCOE REGION CONSERVATION AUTHORITY, 2024. All Rights Reserved. The following data sets of Assessment Parcel, Roads, Upper & Lower Tier Municipalities, Wetlands are © Kings Printer for Ontario. Reproduced with Permission, 2024. The Current Regulation Limit and Boundary data sets are derived products from several datasets. Orthophotography 2002, 2005, 2007-2009, 2011-2024, © First Base Solutions, Inc.

Scale 1: 6,491



# Area to be upgraded



# Previous Permeable Product Upgrade of 2016



Permeable Blocks Crumbling in 2018 (2 years Post-Installation)



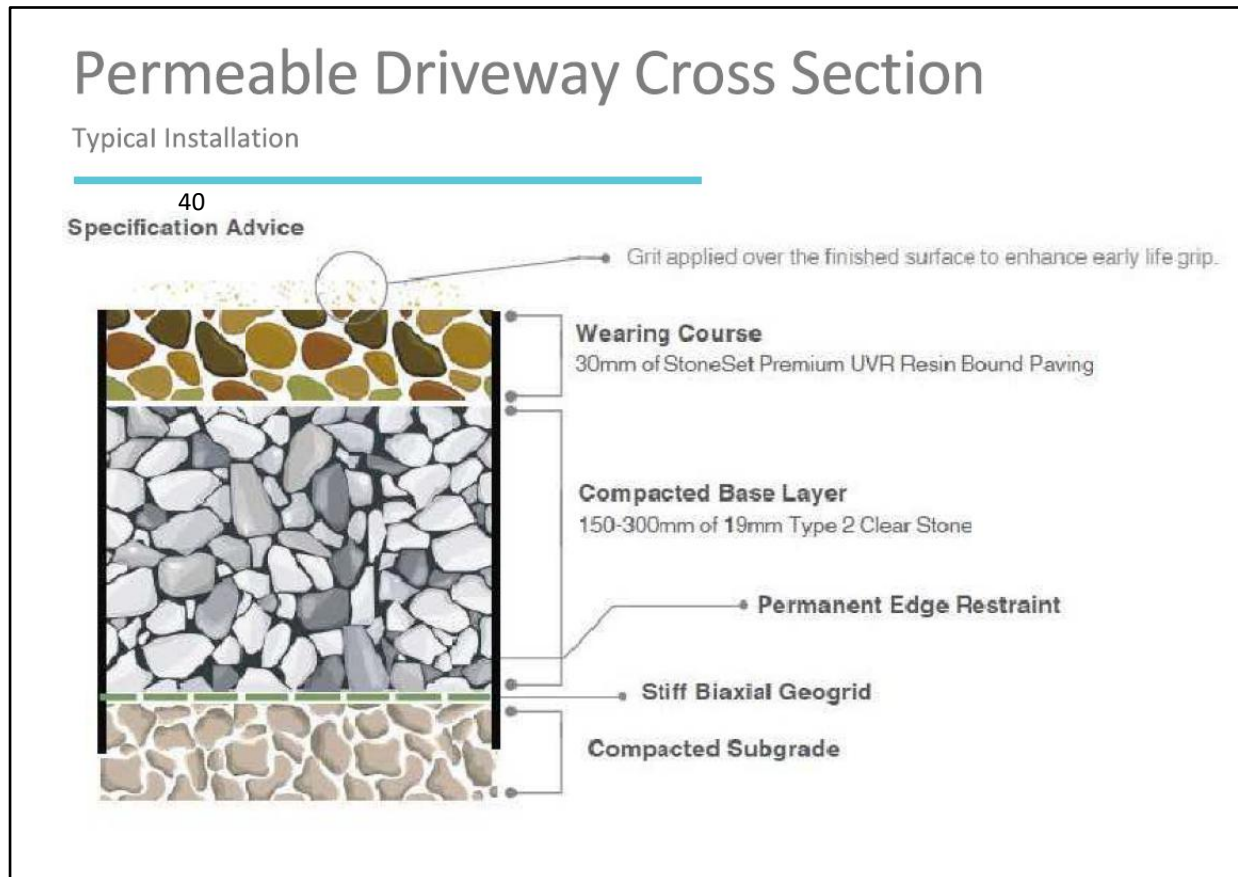
# Permeable Parking Area Condition

April 2025

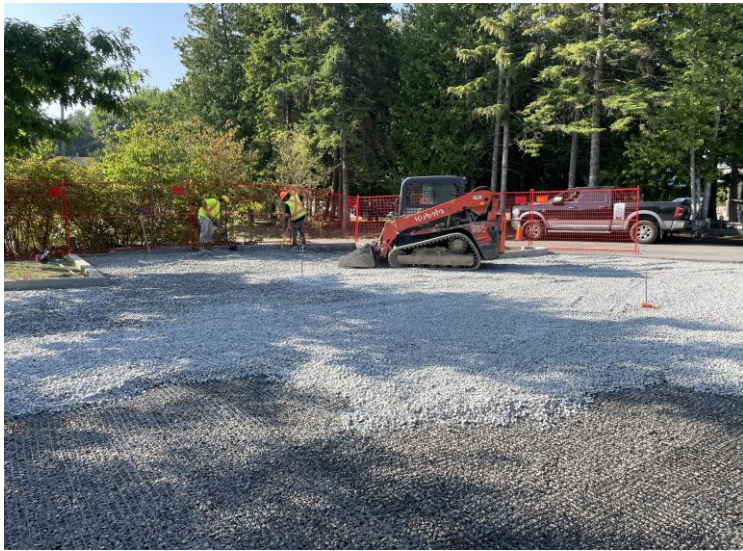


# Dream Pave Parking Upgrade Opportunity

- Dream Pave offered to install the product at no cost, subject to the removal the existing blocks and installing base material. This is valued at **\$58,000**;
- Conservation Authority staff to monitor and share data on product performance;
- Opportunity to monitor a low maintenance Low Impact Development product.



# Permeable Parking Preparation Work



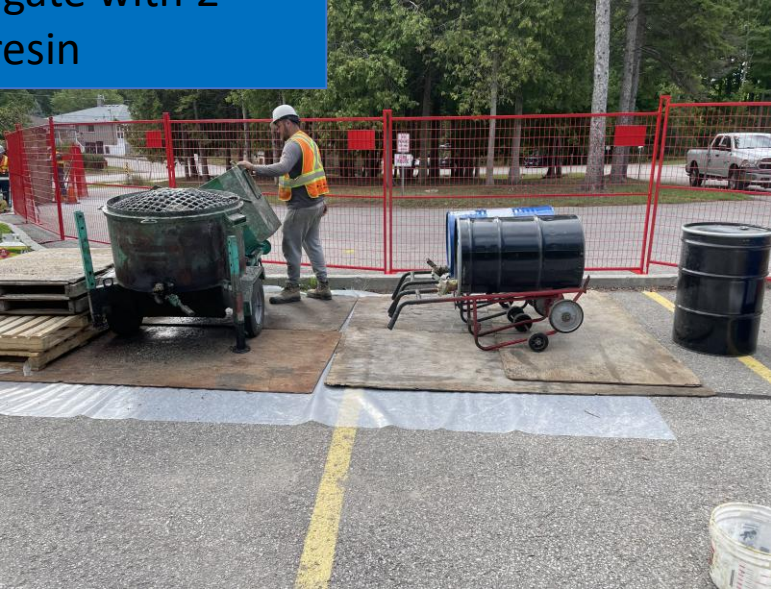
# Installation of Dream Pave



Mixture of Granite aggregate with 2 part resin



Installation of first 20mm. layer of stone/resin mixture



# Administrative Offices

## Permeable Parking Upgrade

### Project Costs:

- Prep. Work: \$30K
- Permeable Pavement: In-kind contribution from Dream Pave valued at \$58K

**Warranty:** 3 years

**Lifespan:** 30 years

**Benefits:** Resists salt, oils, can be plowed in the winter, easy annual maintenance with spring cleaning using sweeper/leaf blower and garden hose.

**Water Balance:** Annual Infiltration-173 m<sup>3</sup>



Reducing  
Sedimentation



Mitigating Flooding  
and Controlling  
Stormwater



Reducing  
Phosphorus





**Thank you**