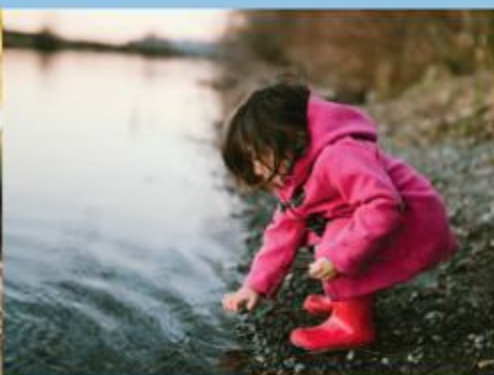
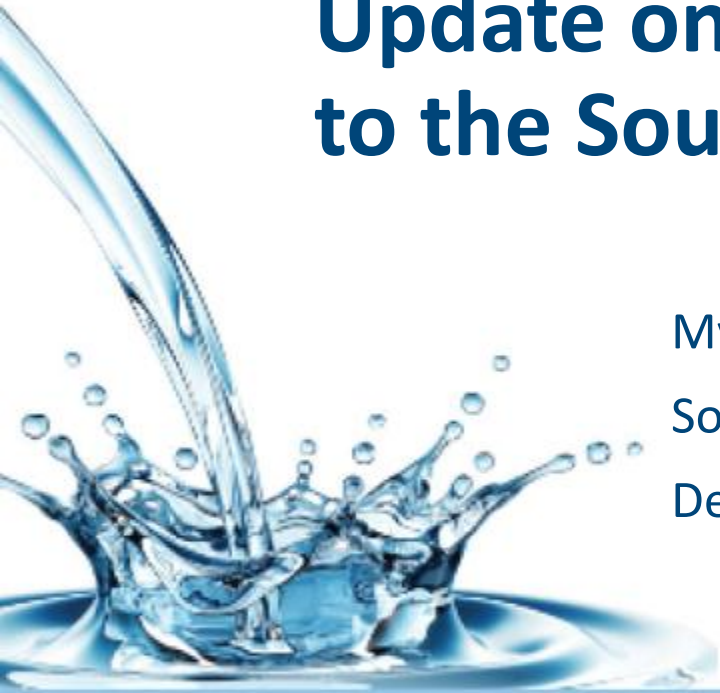


Update on Section 36 Amendment to the Source Protection Plan

Mystaya Touw,
Sourcewater Protection Specialist
December 5, 2025

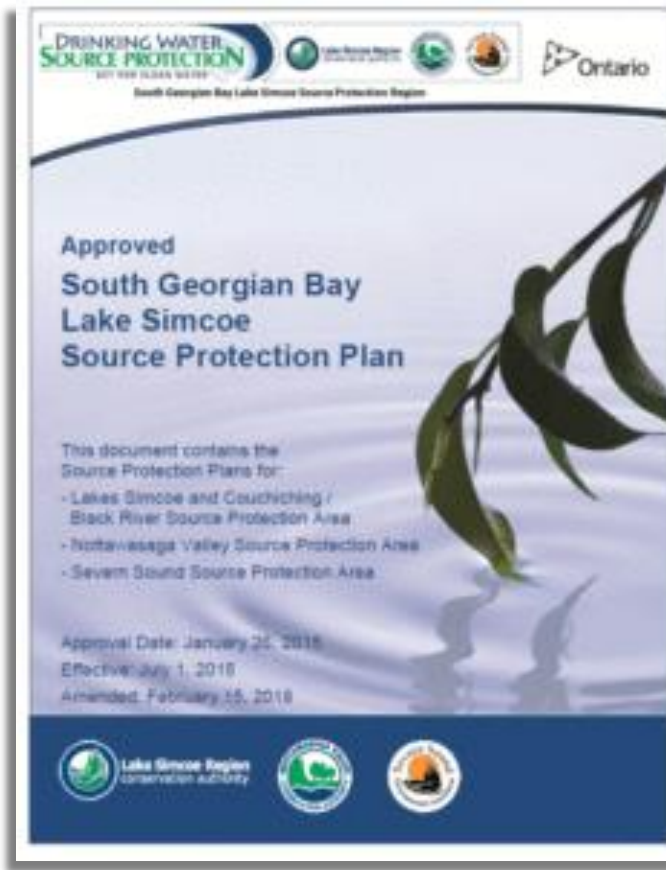


Water
is life.
Protect
Yours.

Presentation outline

- Overview of S. 36 Amendment
- Some Key Changes
- Consultation Process

What is the Section 36 Amendment?



- Section 51
 - Simple changes
- Section 34
 - Changes to individual policies or systems
- **Section 36**
 - **Periodic review and updates**

Some Important Dates

- **July 2015**

Source Protection Plan approved, and Minister's Order received

- **December 2021**

New Technical Rules approved

- **October 2024**

Draft of proposed changes brought before the Source Protection Committee

Source Water Documents

- Source Protection Plan
- Explanatory Document
- Assessment Reports
 - Black-Severn
 - Lake Simcoe
 - Severn Sound
 - Nottawasaga



Nottawasaga Valley
Conservation Authority



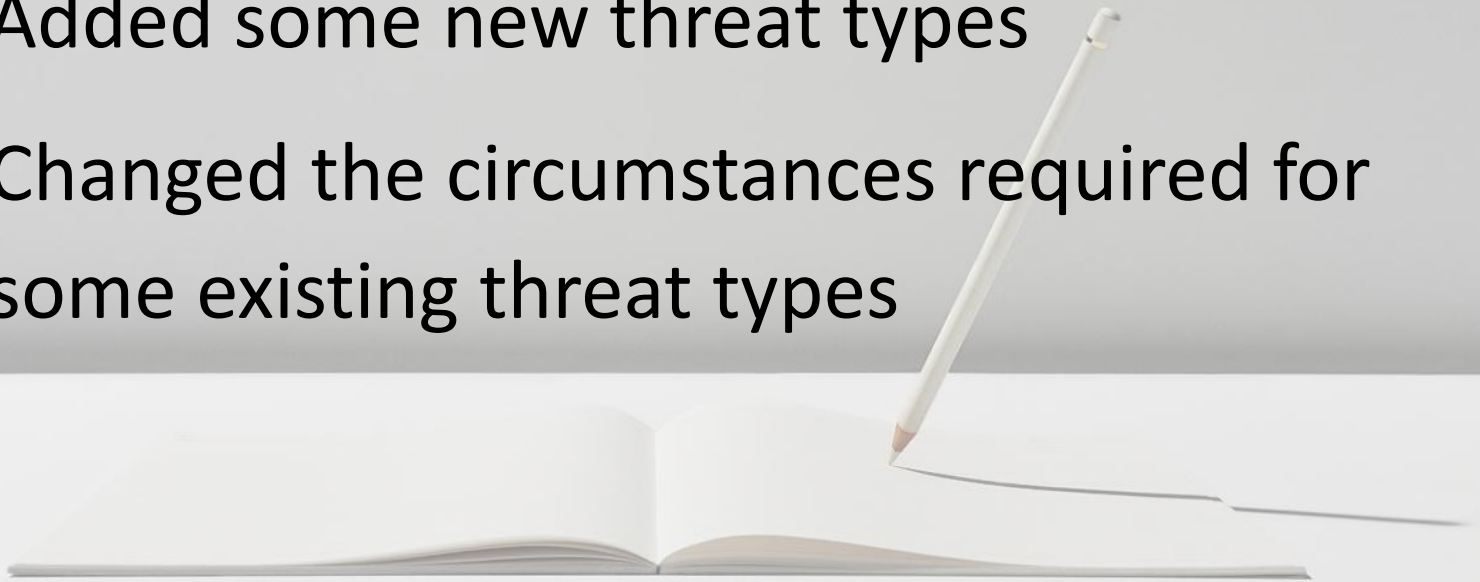
Severn Sound
Environmental Association

Types of changes included in the S.36 Amendment package

- **Changes related to feedback from implementers of the plan**
- **2021 Technical Rules compliance changes**
- Resolving existing errors
- Enhancing document accessibility
- Updating outdated information

Overview of Technical Rule Changes

- The 2021 Technical Rules
 - Added some new threat types
 - Changed the circumstances required for some existing threat types



Technical Rules -Substantial Changes



Key Changes around Salt and Snow

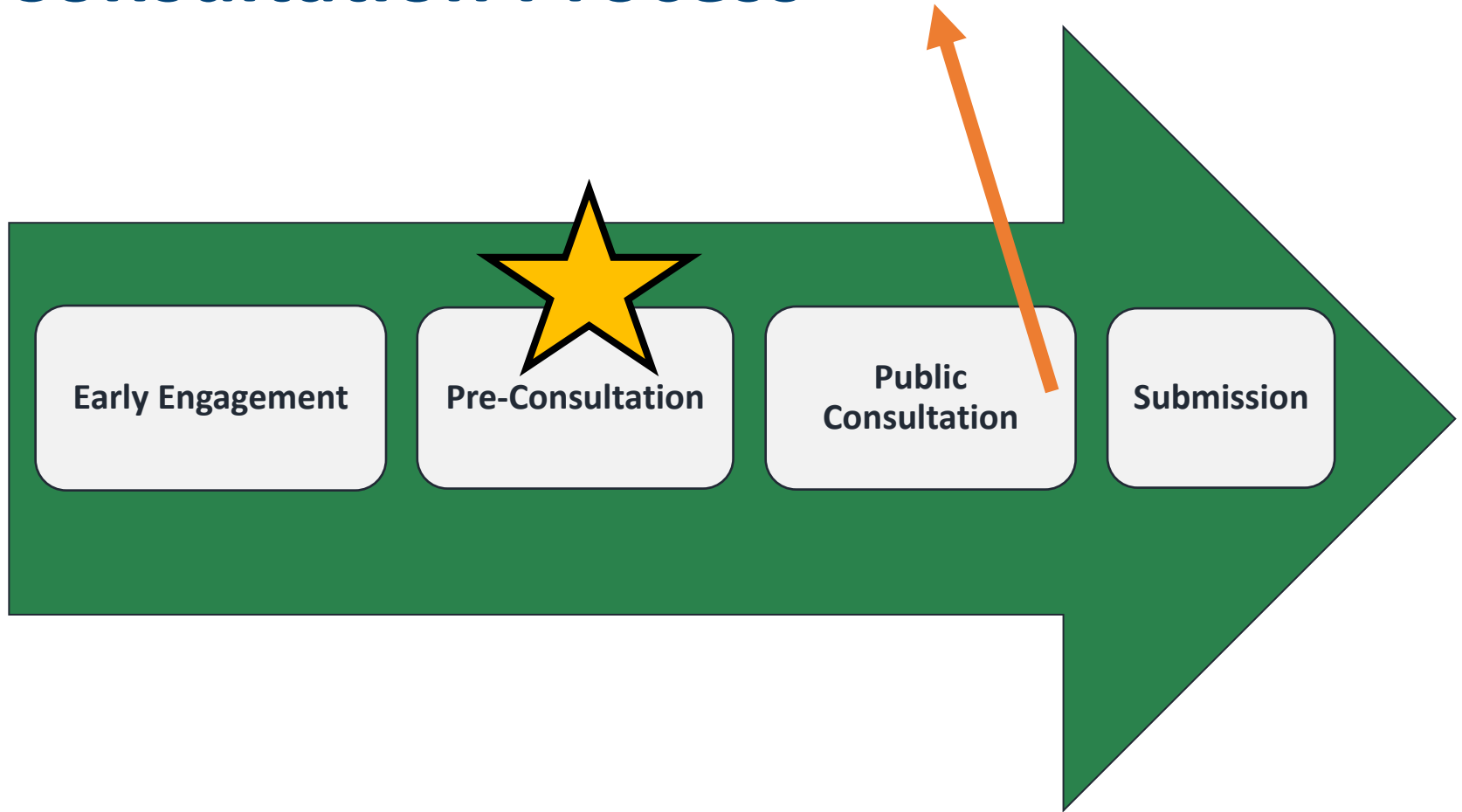
- Taking salt more seriously
- Lowering the threshold for when salt is considered a threat based on the amount used/stored and the amount of pavement in vulnerable areas
- More potential threats
- Policy approach:
 - Prohibitions on large amounts of storage in vulnerable areas
 - Education and outreach for residential properties
 - Risk management plans elsewhere

Key Changes around Pesticides

- Now concerned with any pesticide, not a set list, and use on any property type
- Areas of concern around wells and intakes have not changed
- Application policies have changed
 - Education and outreach for domestic class pesticides
 - Risk management plans or pesticide permits elsewhere

Consultation Process

SPA Endorsement





**A clean glass of water starts
long before you turn on the tap**

Thank you!