

# Source Water Protection

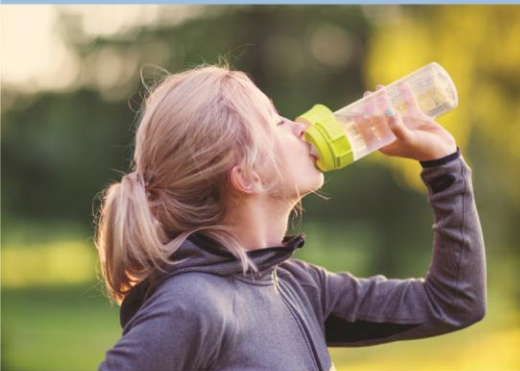
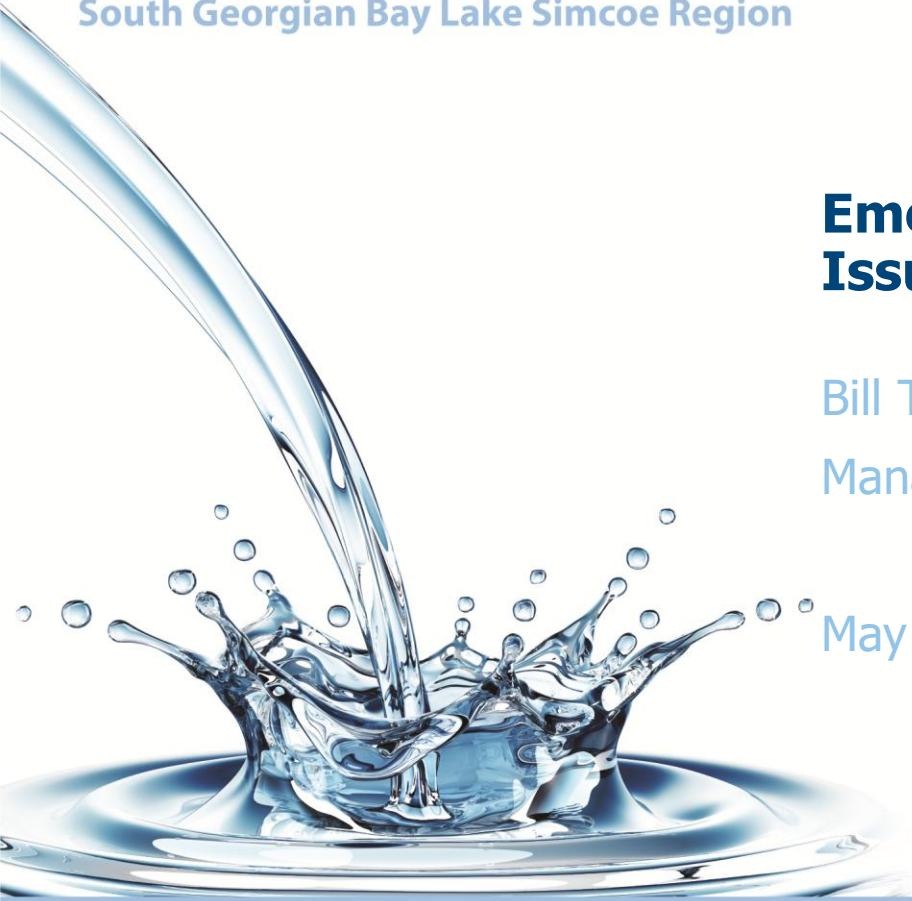
South Georgian Bay Lake Simcoe Region

## Emergence of a drinking water Issue in Cannington

Bill Thompson

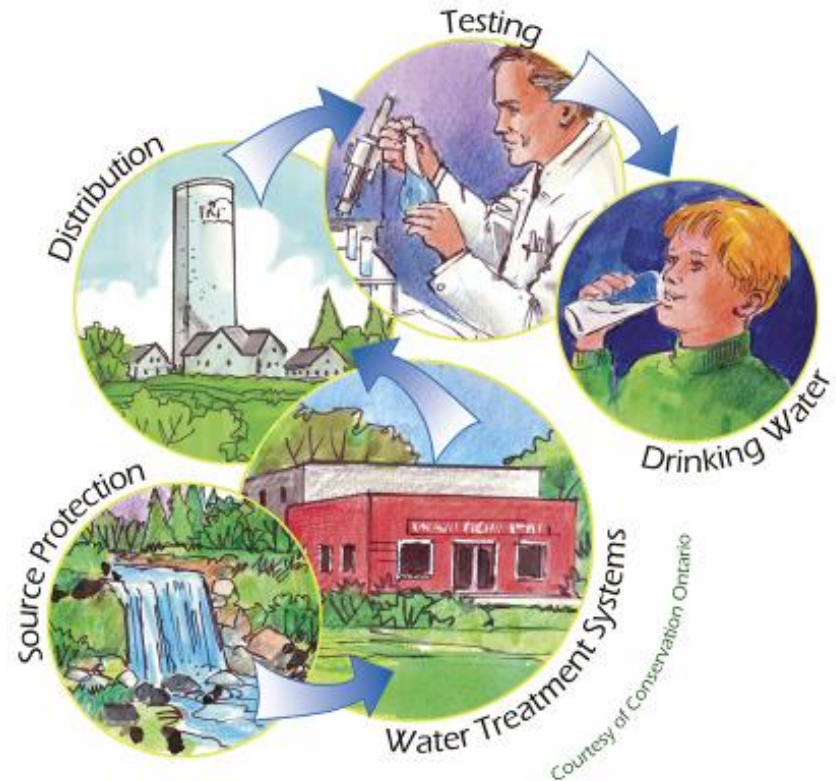
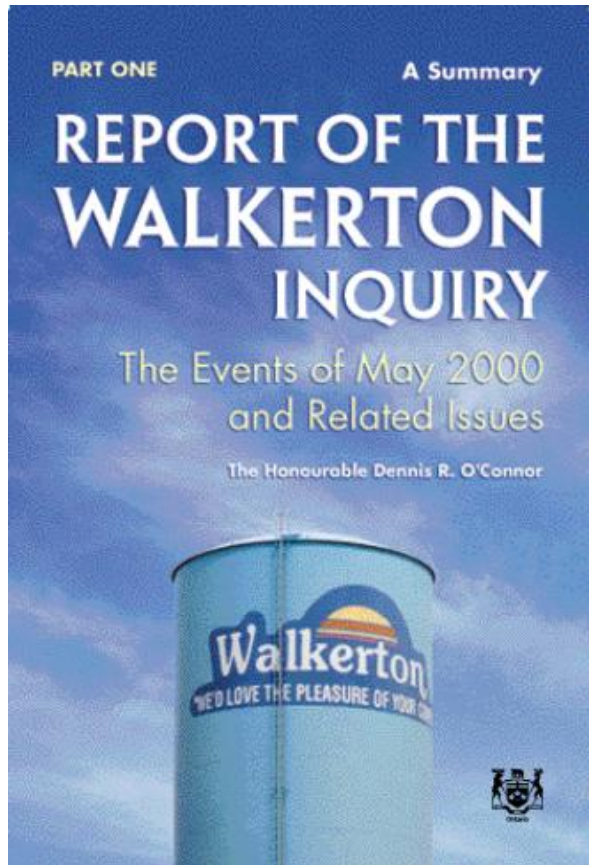
Manager, Watershed Plans and Strategies

May 29, 2026



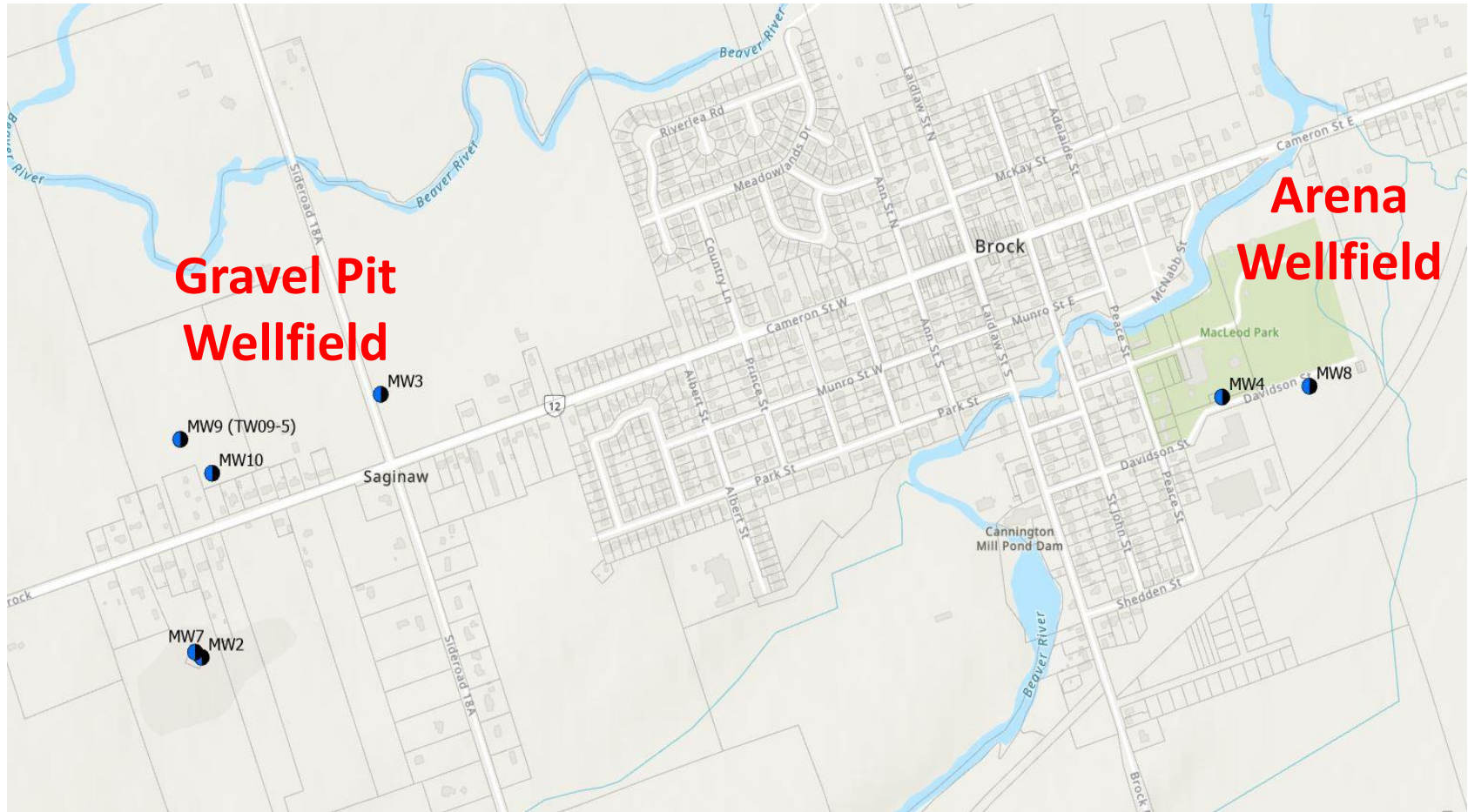
**Water**  
*is life.*  
**Protect**  
**Yours.**

# A multi-barrier approach to protecting drinking water

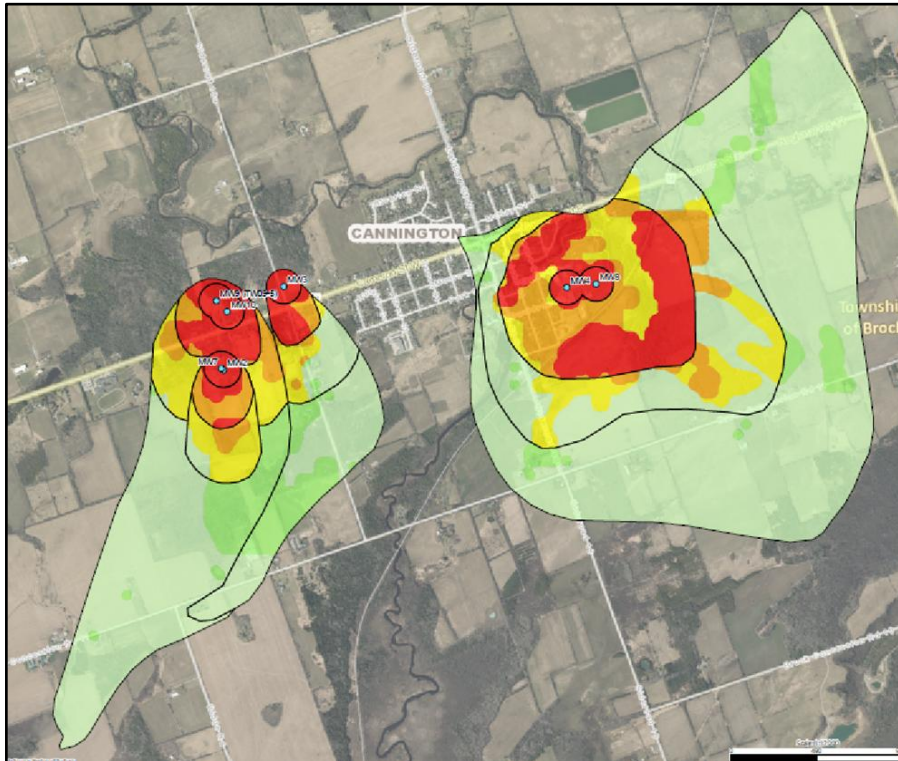


**Water *is* life. Protect Yours.**

# Cannington municipal supply wells

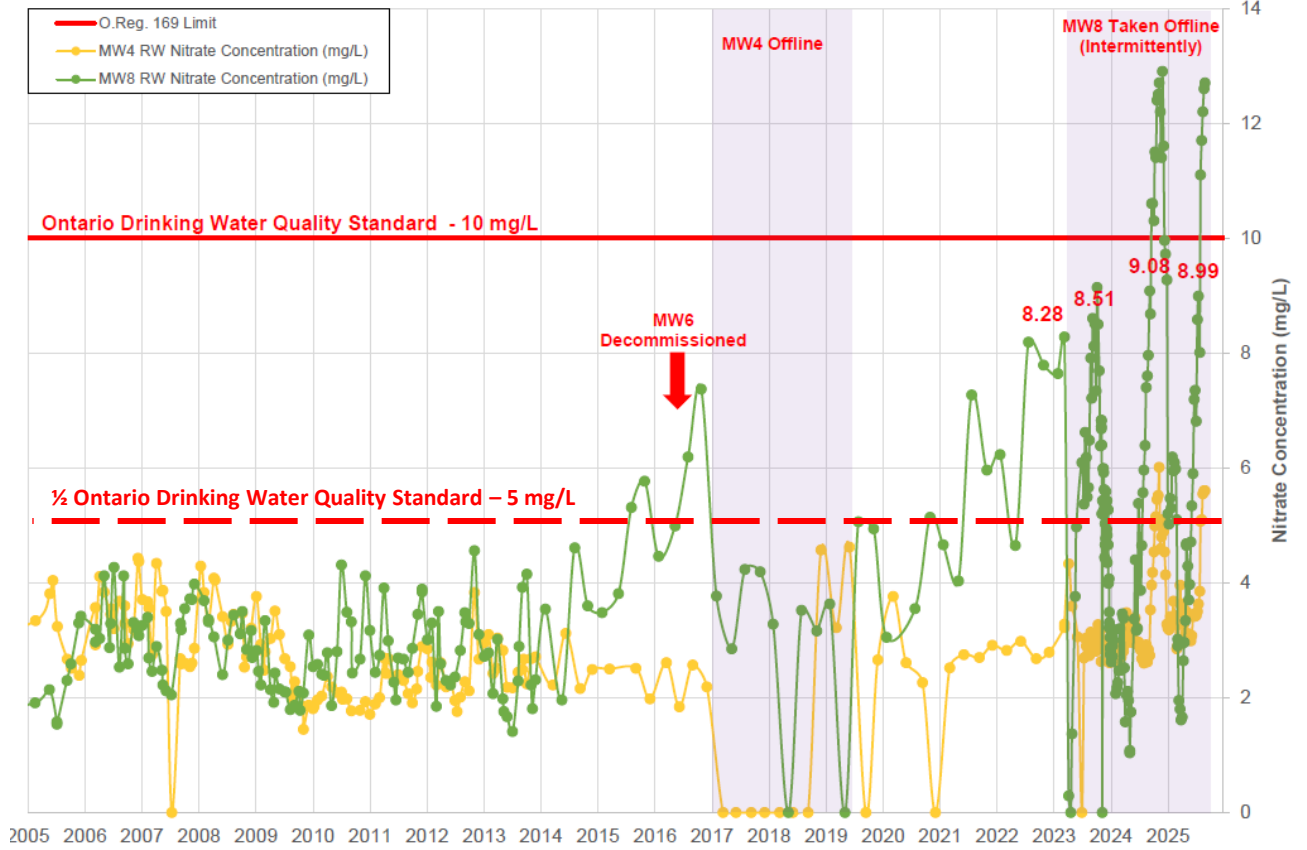
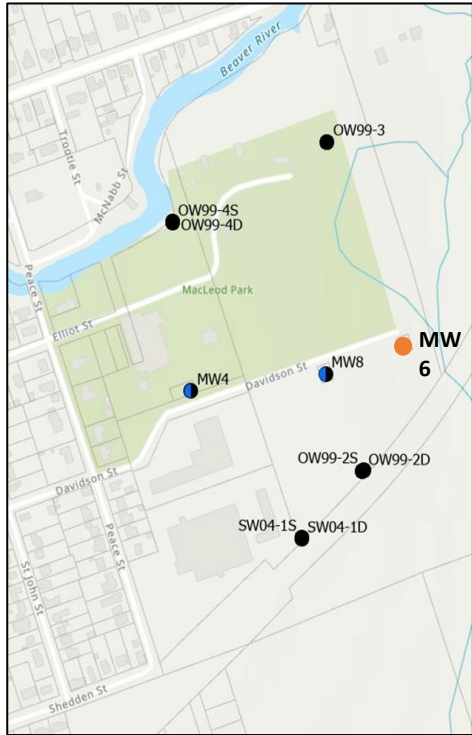


# Cannington wellhead protection areas

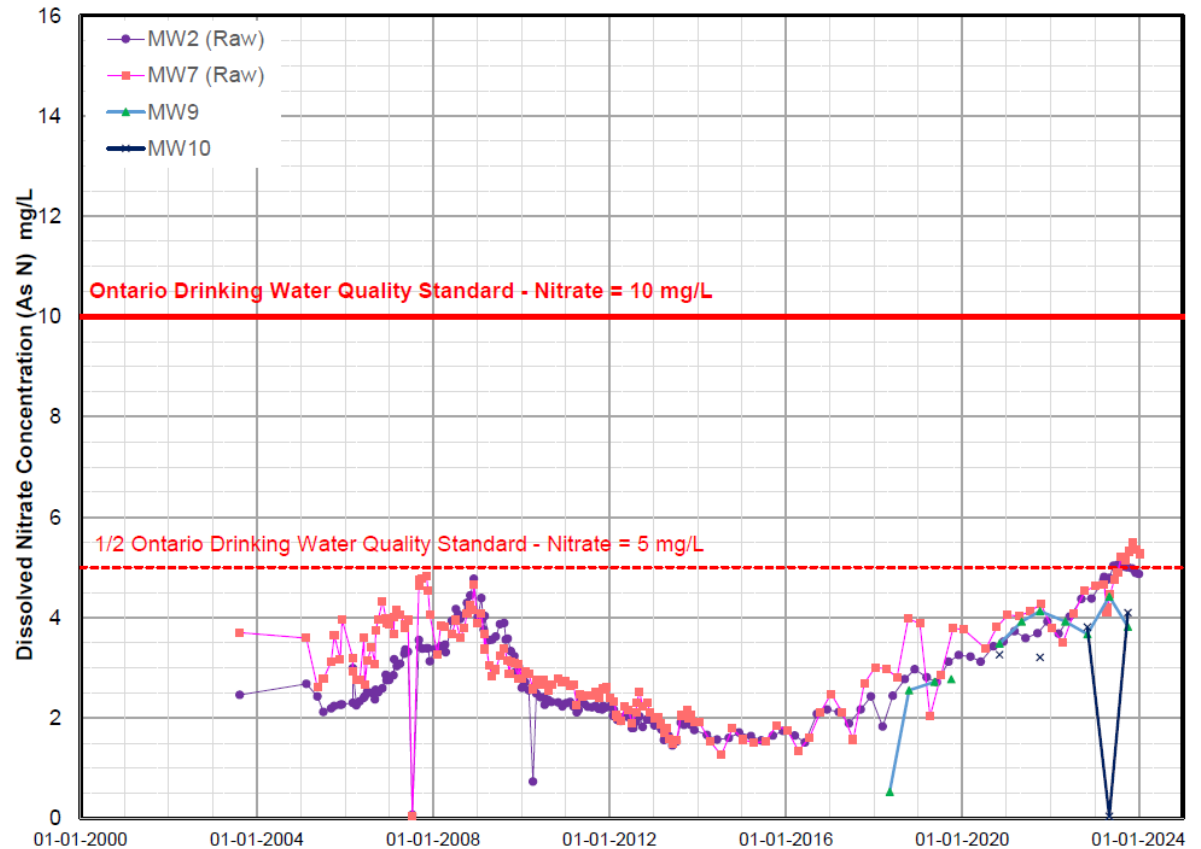


**Water** *is* life. **Protect** Yours.

# Nitrate trends: Arena wellfield



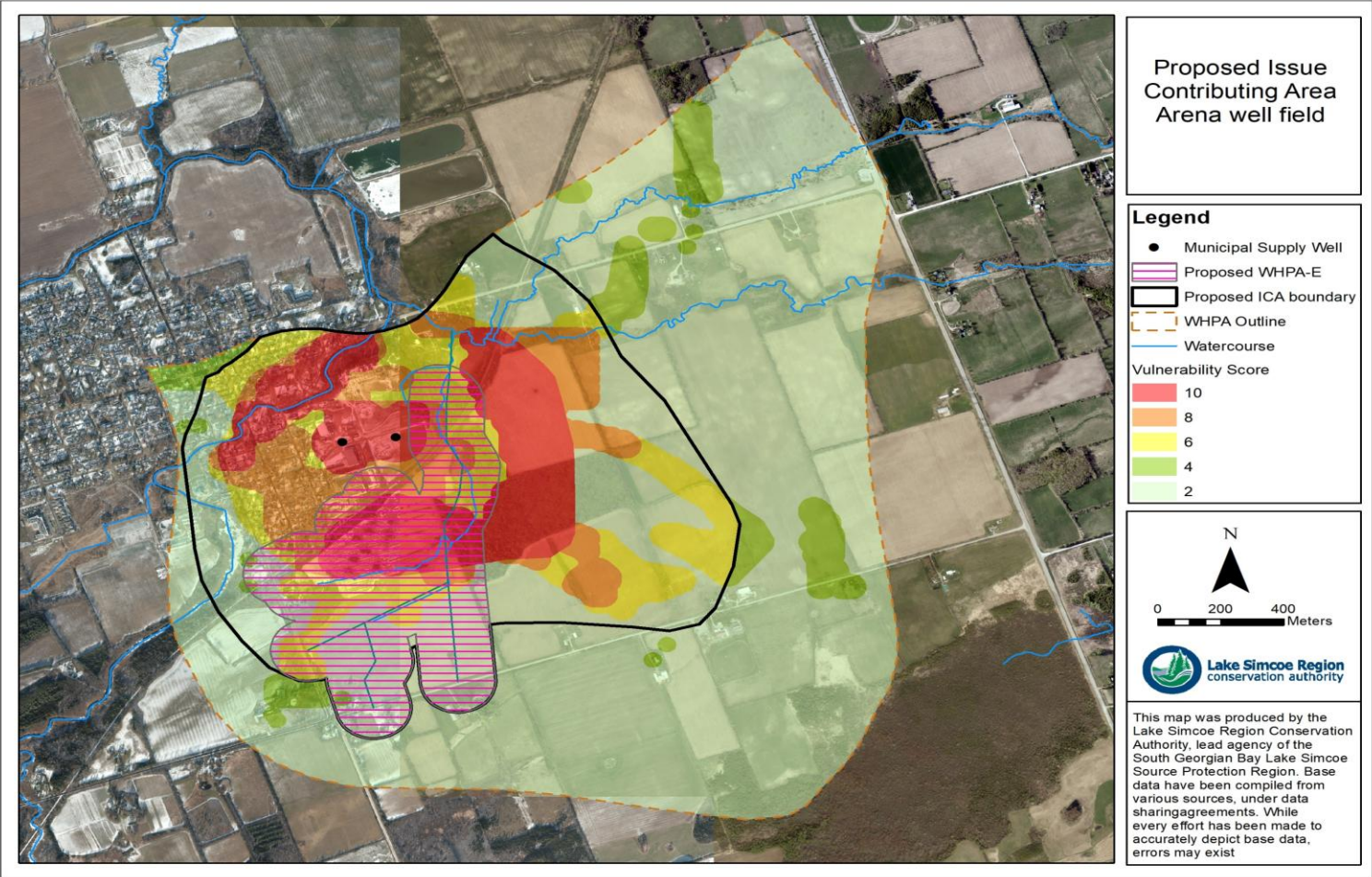
# Nitrate trends: gravel pit wellfield



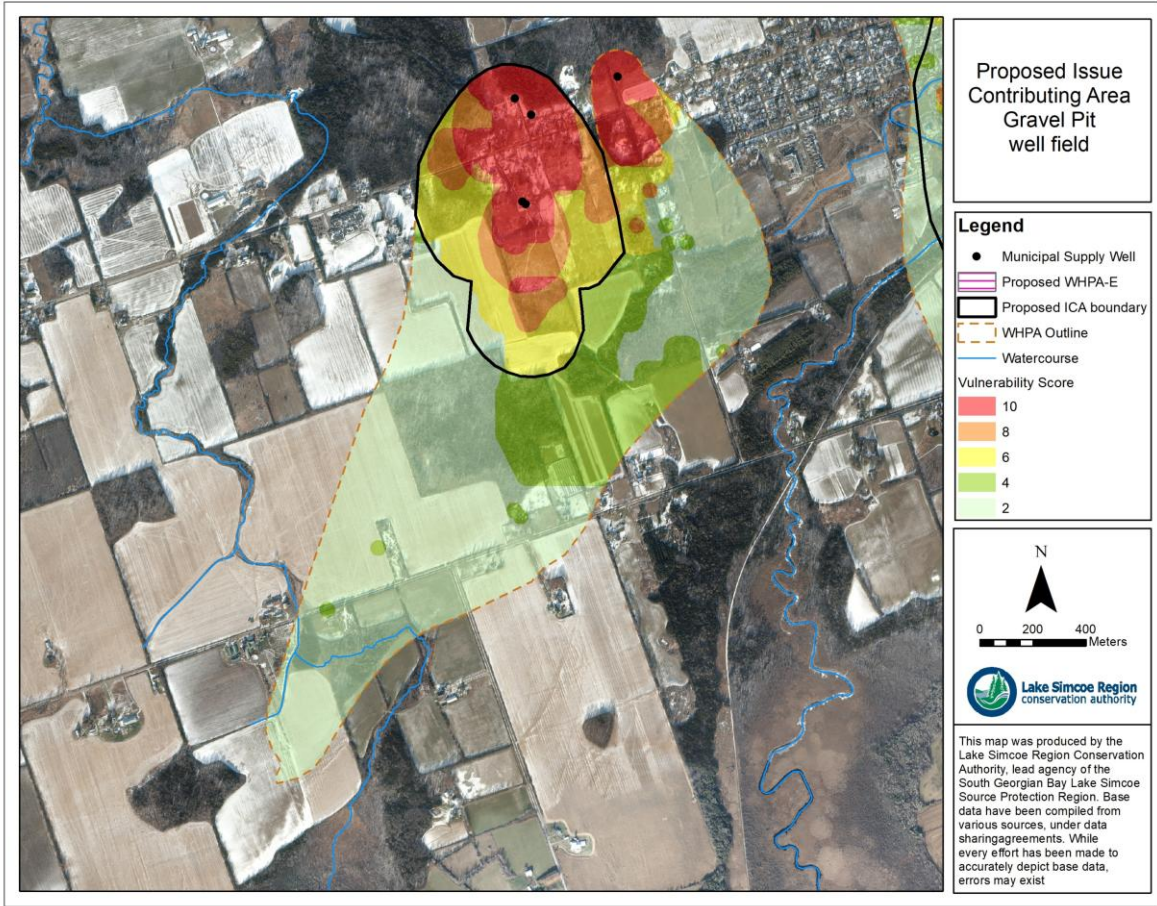
# What is an 'Issue'?

- A drinking water Issue exists if:
  - A contaminant in a well exceeds the Ontario Drinking Water Quality Standard; or,
  - It is increasing such that it is projected to exceed the Standard
- If an Issue is identified
  - An Issue Contributing Area (ICA) needs to be identified
  - All low and moderate threats are to be addressed through policy

# Issue Contributing Area – Arena well field



# Issue Contributing Area – gravel pit well field



# Potential threats to drinking water

- Private septic systems
- Application of fertilizers
- Handling and storage of fertilizer
- Livestock grazing and pasturing
- Farm animal yards

# Policy development approach

- Currently, only significant drinking water threats are managed
- Now, all threats within the Issue Contributing Area must be managed

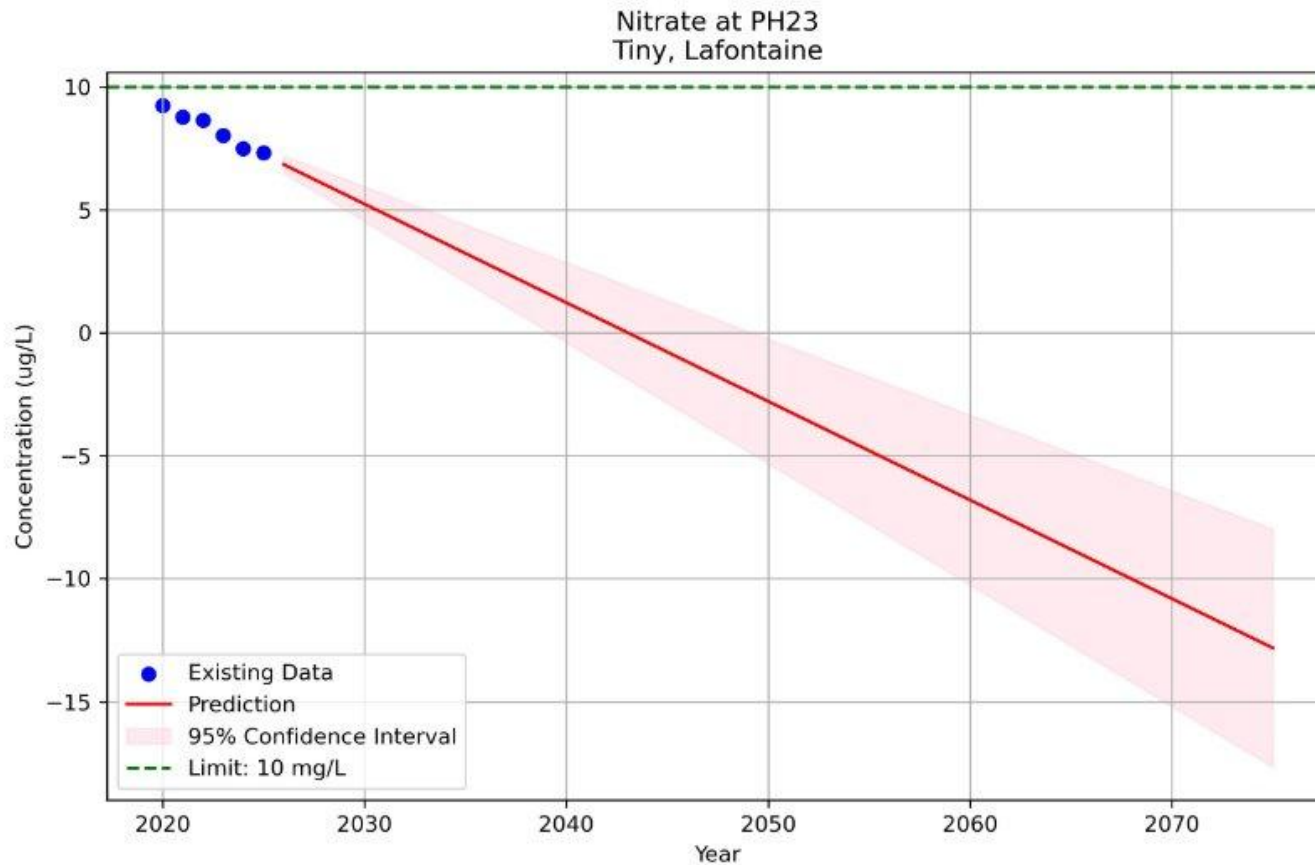
# Proposed policies

Activity	Current policies	Proposed new policies
Septic systems	Inspections where vulnerability score is 10	Septic systems inspected throughout
Manure application	Prohibited in WHPA-A Managed elsewhere	Prohibited where vulnerability score is 10 Managed elsewhere
Manure storage	Managed	Prohibited where vulnerability score is 10 Managed elsewhere
Commercial fertilizer application	Managed	Prohibited where vulnerability score is 10 Managed elsewhere
Commercial fertilizer storage	Managed	Prohibited where vulnerability score is 10 Managed elsewhere

# Implications of Proposed policies



# Not a unique approach



# Amendment process status



- Technical work completed

- Early engagement

- Source protection committee presentation

- Pre-consultation with implementing bodies

- Municipal endorsement

- Public consultation

- Submission to Ministry for approval



# Summary

- Municipal drinking water in Cannington remains safe to drink, however nitrate concentrations are increasing
- In cases like this, we are required to map potential contributing areas and to create policies to manage potential sources
- Draft Source Protection Plan proposes to prohibit fertilizer use in extended areas
- We recognize this is a significant impact on local residents, but a loss of municipal drinking water must be avoided

# Thank you

**Water**  
*is life.*  
**Protect**  
*Yours.*



**Water** *is life.* **Protect** *Yours.*